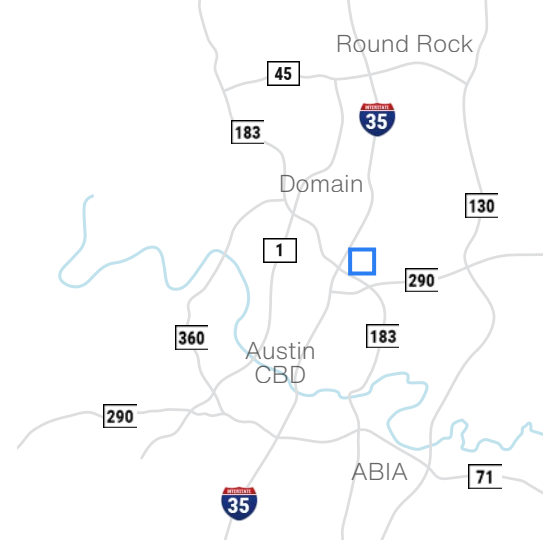


# Cameron Road Corporate Park II

1130 Rutherford Lane, Austin, TX 78753

**13,205 SF**  
**Office/Warehouse**



Available Suites

**Suite 250 - 13,205 SF**

## Building Features



**85% Warehouse**



**15% Office**



**24' Clear Height**



**5 Dock-High Doors**



**Wet Pipe Sprinkler System**



**Located Near I-35 & Hwy 183 Intersection**



**3/1,000 Parking Ratio**



**410 Parking Spaces**



**Davis Bass**  
bass@hpitx.com  
(512) 203-5130

**Brooks Benkendorfer**  
brooks@hpitx.com  
(512) 848-2582

**Will Thomas**  
wthomas@hpitx.com  
(512) 835-4455

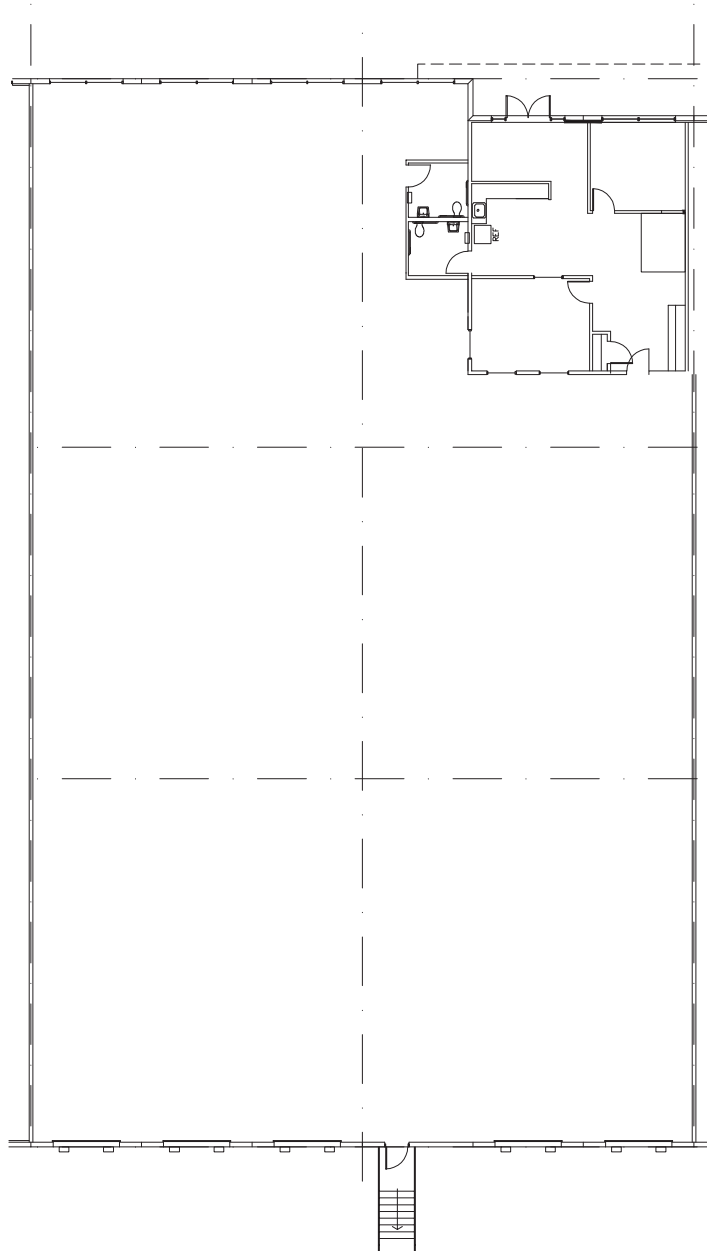
No warranty or representation, expressed or implied, is made as to the accuracy of the information contained herein, and same is submitted subject to errors, omissions, change of price, rental or other conditions, withdrawal without notice, and to any special listing conditions imposed by the principals.

# Cameron Road Corporate Park II

1130 Rutherford Lane, Austin, TX 78753

**Suite 250**

**13,205 SF**  
**Office/Warehouse**



**Davis Bass**  
bass@hpitx.com  
(512) 203-5130

**Brooks Benkendorfer**  
brooksb@hpitx.com  
(512) 848-2582

**Will Thomas**  
wthomas@hpitx.com  
(512) 835-4455

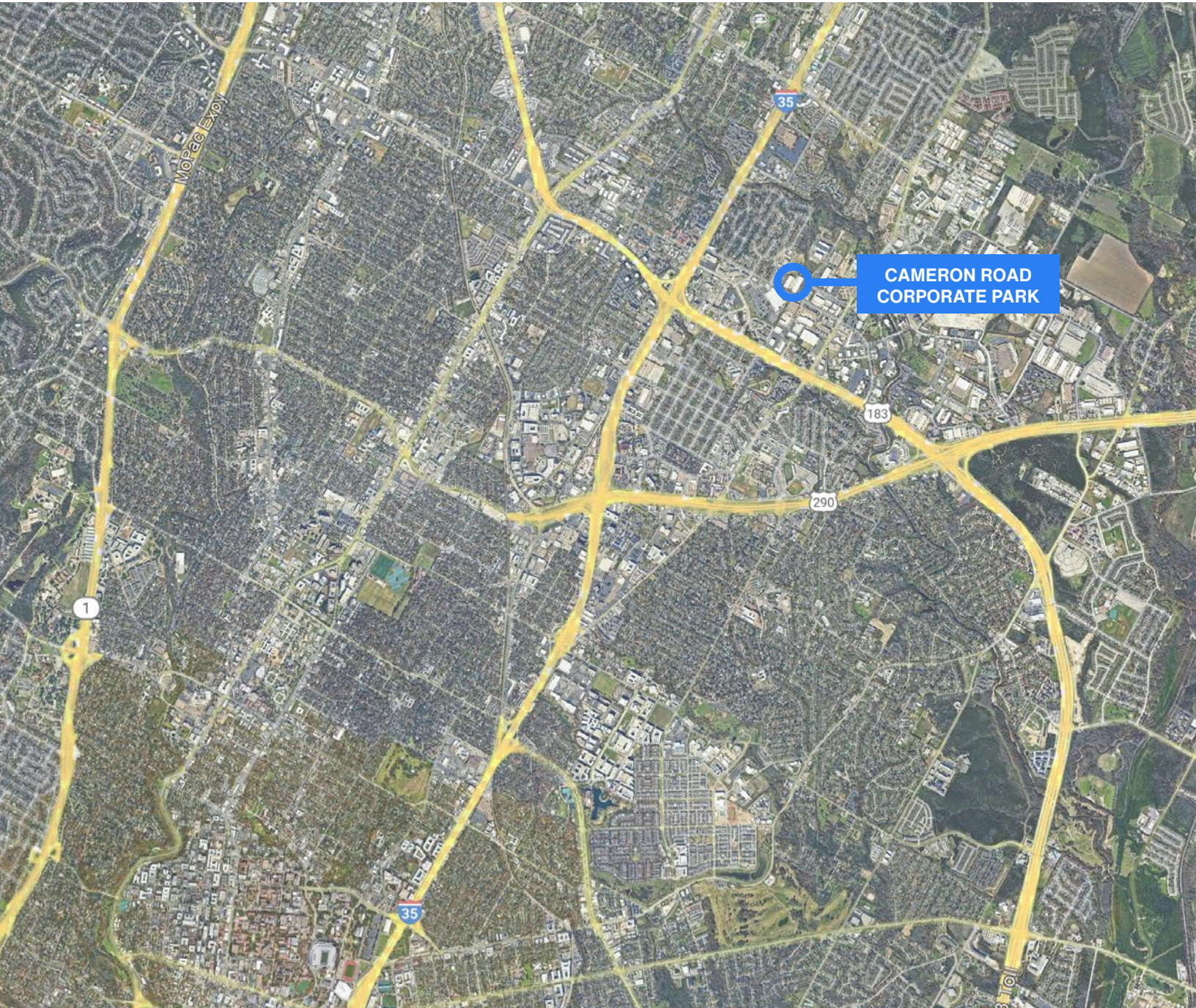
No warranty or representation, expressed or implied, is made as to the accuracy of the information contained herein, and same is submitted subject to errors, omissions, change of price, rental or other conditions, withdrawal without notice, and to any special listing conditions imposed by the principals.

# Cameron Road Corporate Park II

1130 Rutherford Lane, Austin, TX 78753

**Suite 250**

**13,205 SF**  
**Office/Warehouse**



**Davis Bass**  
bass@hpitx.com  
(512) 203-5130

**Brooks Benkendorfer**  
brooks@hpitx.com  
(512) 848-2582

**Will Thomas**  
wthomas@hpitx.com  
(512) 835-4455

No warranty or representation, expressed or implied, is made as to the accuracy of the information contained herein, and same is submitted subject to errors, omissions, change of price, rental or other conditions, withdrawal without notice, and to any special listing conditions imposed by the principals.