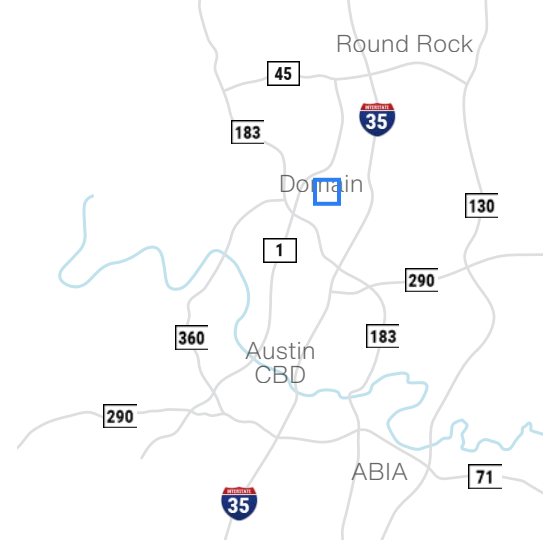


Rutland 2

10220 Metropolitan Drive - Austin, TX 78758

11,700 SF
Bulk Warehouse



Available Suites

Suite C - 11,700 SF

Building Features



95% Warehouse



5% Office



18' Clear Height



**Front Loading,
2 Dock High Doors**



**Quick Access to
MoPac and Hwy 183**



End Cap Space



Davis Bass
bass@hpitx.com
(512) 203-5130

Brooks Benkendorfer
brooksb@hpitx.com
(512) 848-2582

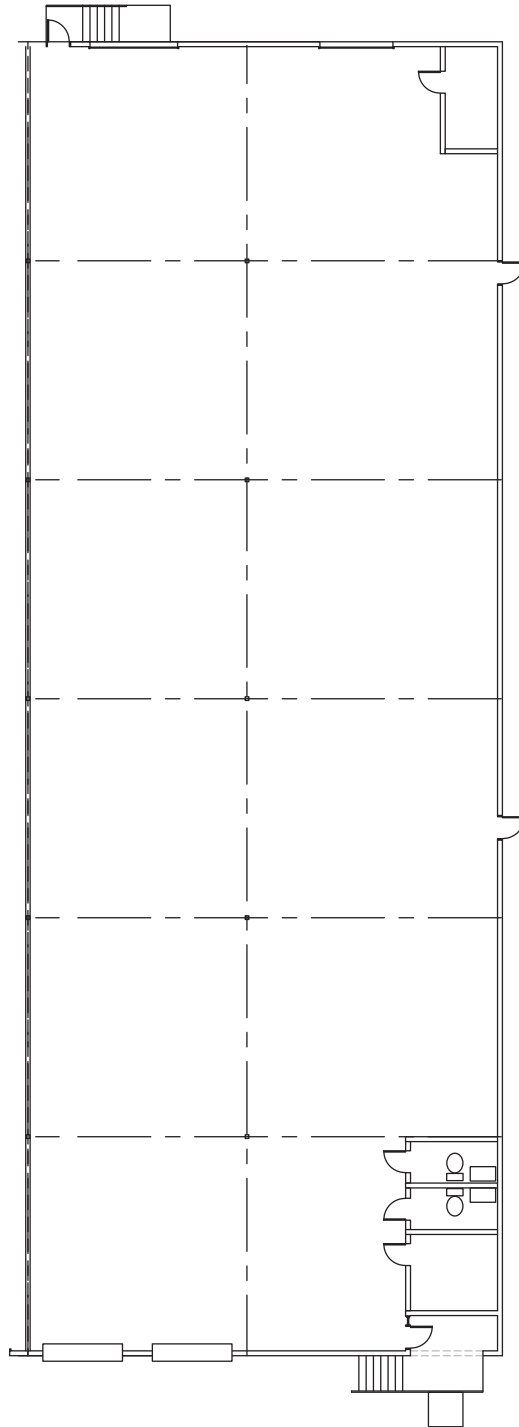
Will Thomas
wthomas@hpitx.com
(512) 835-4455

No warranty or representation, expressed or implied, is made as to the accuracy of the information contained herein, and same is submitted subject to errors, omissions, change of price, rental or other conditions, withdrawal without notice, and to any special listing conditions imposed by the principals.

Rutland 2

10220 Metropolitan Drive - Austin, TX 78758

Suite C
11,700 SF
Bulk Warehouse



Davis Bass
bass@hpitx.com
(512) 203-5130

Brooks Benkendorfer
brooksb@hpitx.com
(512) 848-2582

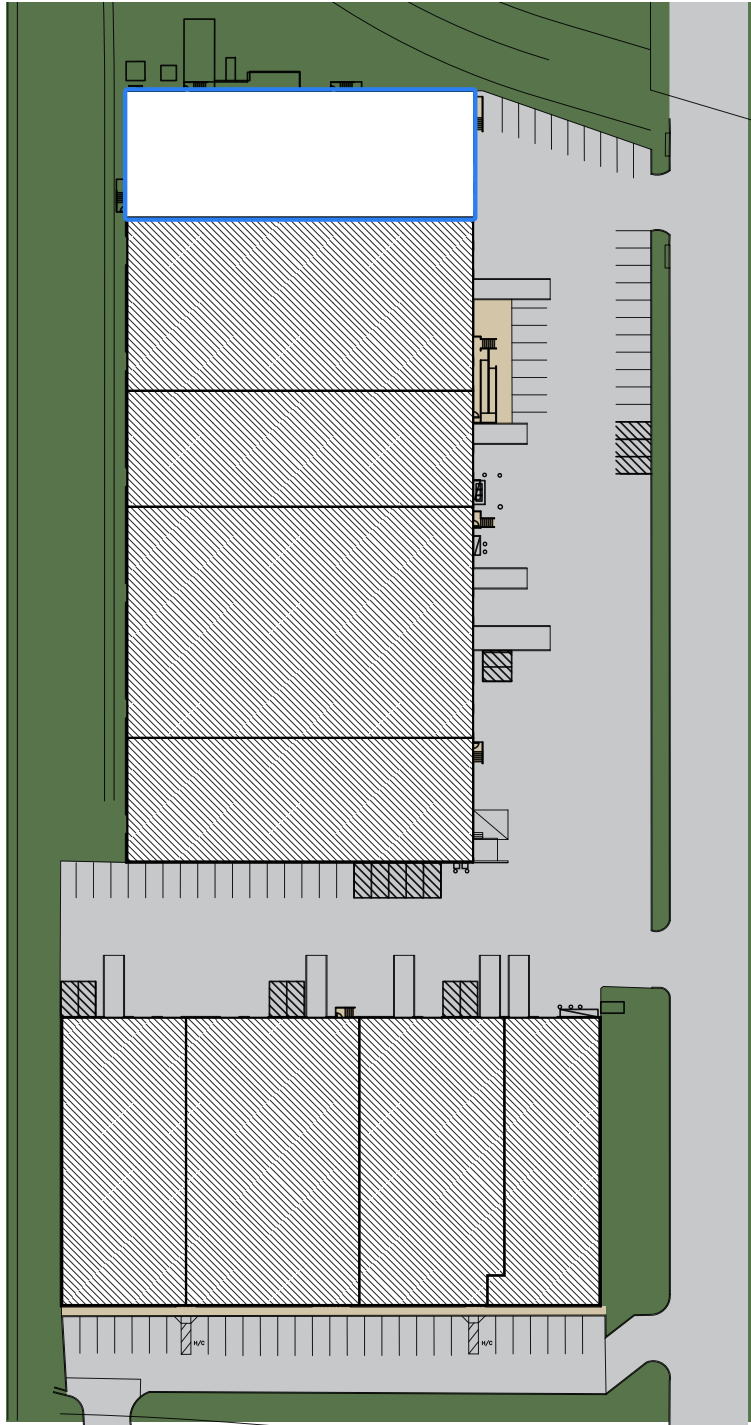
Will Thomas
wthomas@hpitx.com
(512) 835-4455

No warranty or representation, expressed or implied, is made as to the accuracy of the information contained herein, and same is submitted subject to errors, omissions, change of price, rental or other conditions, withdrawal without notice, and to any special listing conditions imposed by the principals.

Rutland 2

10220 Metropolitan Drive - Austin, TX 78758

Suite C
11,700 SF
Bulk Warehouse



Davis Bass
bass@hpitx.com
(512) 203-5130

Brooks Benkendorfer
brooksb@hpitx.com
(512) 848-2582

Will Thomas
wthomas@hpitx.com
(512) 835-4455

No warranty or representation, expressed or implied, is made as to the accuracy of the information contained herein, and same is submitted subject to errors, omissions, change of price, rental or other conditions, withdrawal without notice, and to any special listing conditions imposed by the principals.