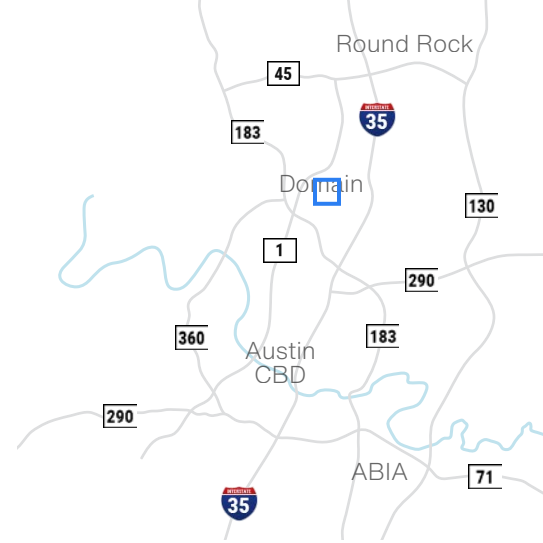


Rutland 2

10220 Metropolitan Drive - Austin, TX 78758

27,900 SF Bulk Warehouse



Available Suites

Suite C+D - 27,900 SF

Building Features



85% Warehouse



15% Office



18' Clear Height



**Front Loading,
4 Dock High Doors**



**Quick Access to
MoPac and Hwy 183**



1 Loading Ramp



End Cap Space



Davis Bass
bass@hpitx.com
(512) 203-5130

Brooks Benkendorfer
brooks@hpitx.com
(512) 848-2582

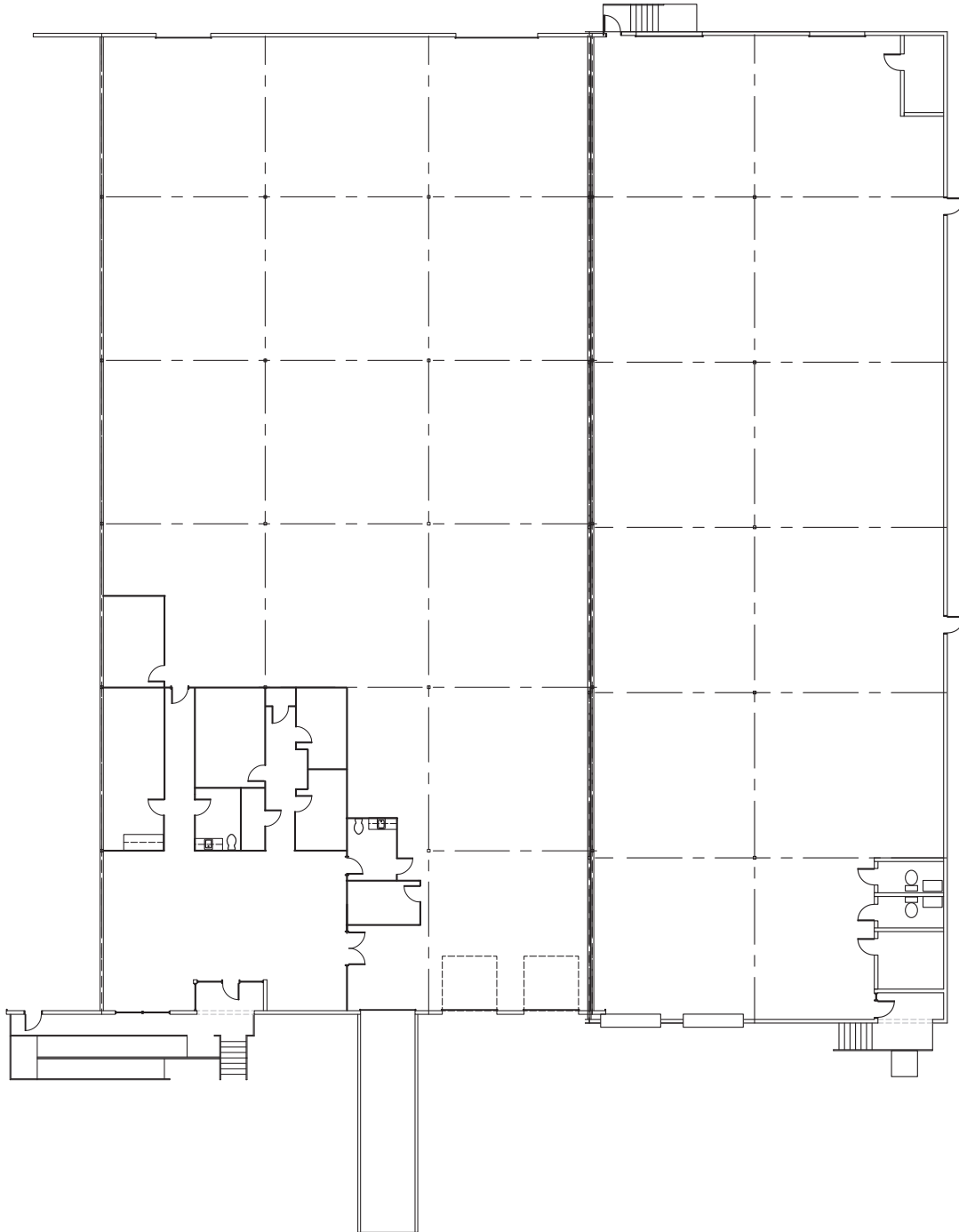
Will Thomas
wthomas@hpitx.com
(512) 835-4455

No warranty or representation, expressed or implied, is made as to the accuracy of the information contained herein, and same is submitted subject to errors, omissions, change of price, rental or other conditions, withdrawal without notice, and to any special listing conditions imposed by the principals.

Rutland 2

10220 Metropolitan Drive - Austin, TX 78758

Suite C+D
27,900 SF
Bulk Warehouse



Davis Bass
bass@hpitx.com
(512) 203-5130

Brooks Benkendorfer
brooks@hpitx.com
(512) 848-2582

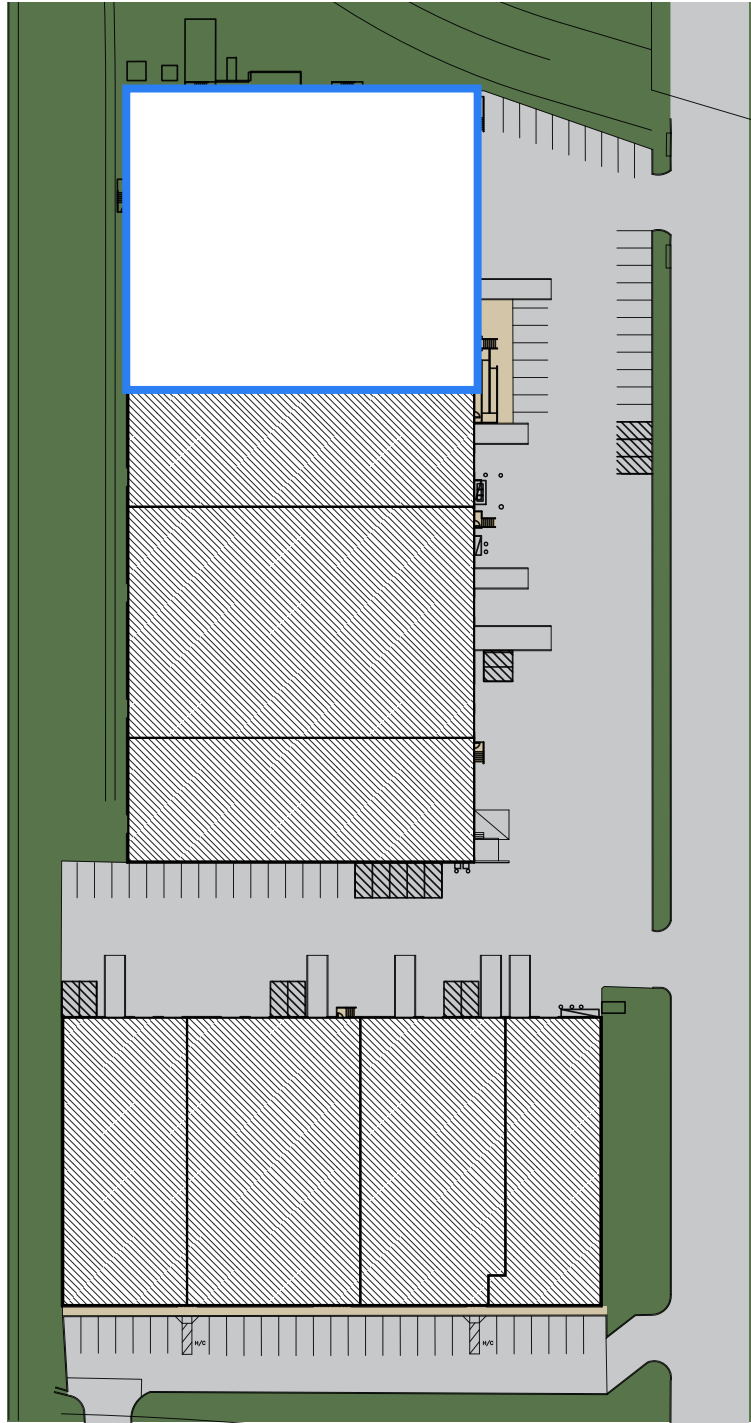
Will Thomas
wthomas@hpitx.com
(512) 835-4455

No warranty or representation, expressed or implied, is made as to the accuracy of the information contained herein, and same is submitted subject to errors, omissions, change of price, rental or other conditions, withdrawal without notice, and to any special listing conditions imposed by the principals.

Rutland 2

10220 Metropolitan Drive - Austin, TX 78758

Suite C+D
27,900 SF
Bulk Warehouse



Davis Bass
bass@hpitx.com
(512) 203-5130

Brooks Benkendorfer
brooks@hpitx.com
(512) 848-2582

Will Thomas
wthomas@hpitx.com
(512) 835-4455

No warranty or representation, expressed or implied, is made as to the accuracy of the information contained herein, and same is submitted subject to errors, omissions, change of price, rental or other conditions, withdrawal without notice, and to any special listing conditions imposed by the principals.