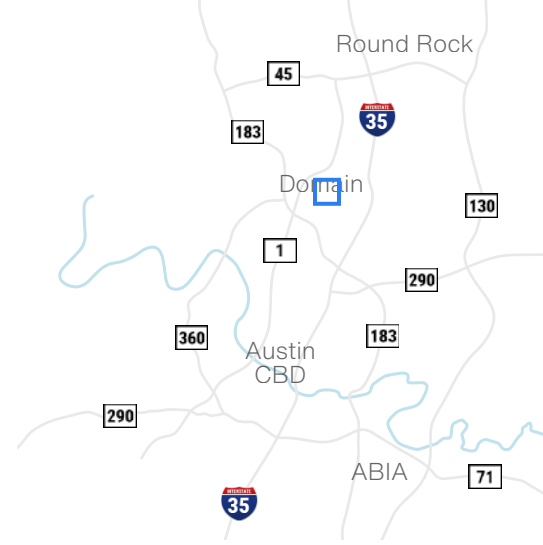


Rutland 2

10220 Metropolitan Drive - Austin, TX 78758

16,200 SF Bulk Warehouse



Available Suites

Suite D - 16,200 SF

Available Now

Building Features



85% Warehouse



15% Office/
Showroom



18' Clear Height



Front Loading,
2 Dock High Doors



Quick Access to
MoPac and Hwy 183



1 Loading Ramp



Davis Bass
bass@hpitx.com
(512) 203-5130

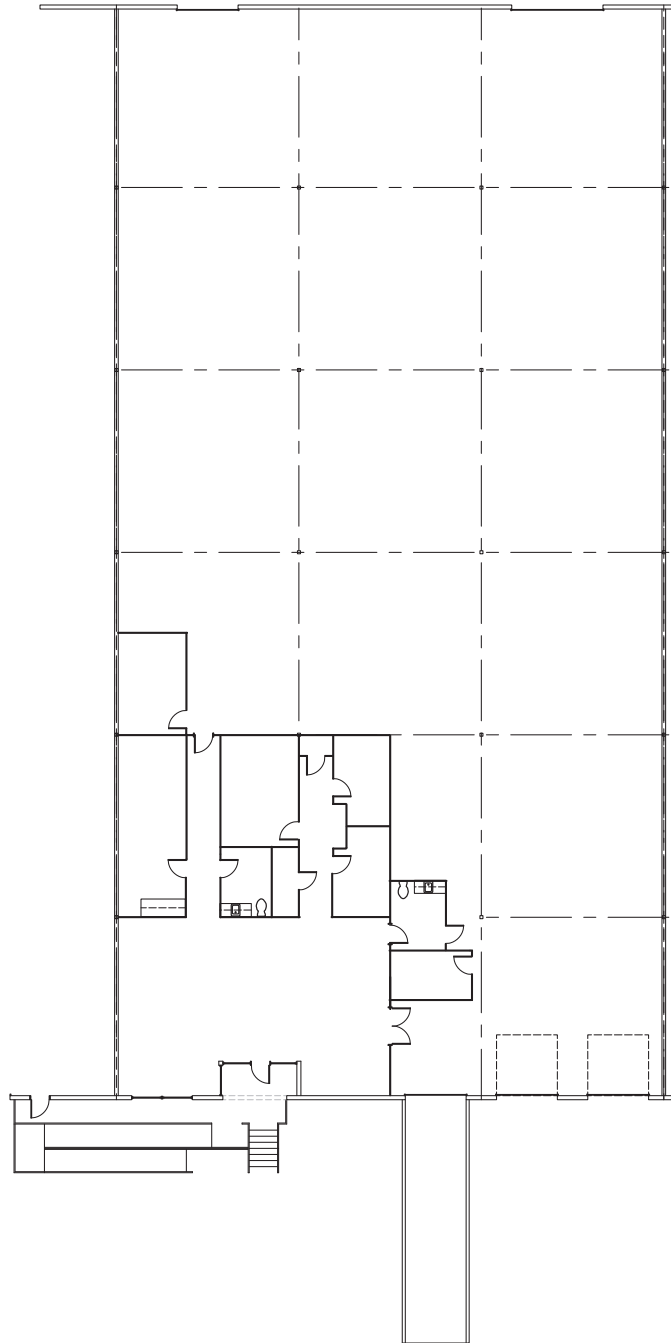
Brooks Benkendorfer
brooks@hpitx.com
(512) 848-2582

No warranty or representation, expressed or implied, is made as to the accuracy of the information contained herein, and same is submitted subject to errors, omissions, change of price, rental or other conditions, withdrawal without notice, and to any special listing conditions imposed by the principals.

Rutland 2

10220 Metropolitan Drive - Austin, TX 78758

Suite D
16,200 SF
Bulk Warehouse



Davis Bass
bass@hpitx.com
(512) 203-5130

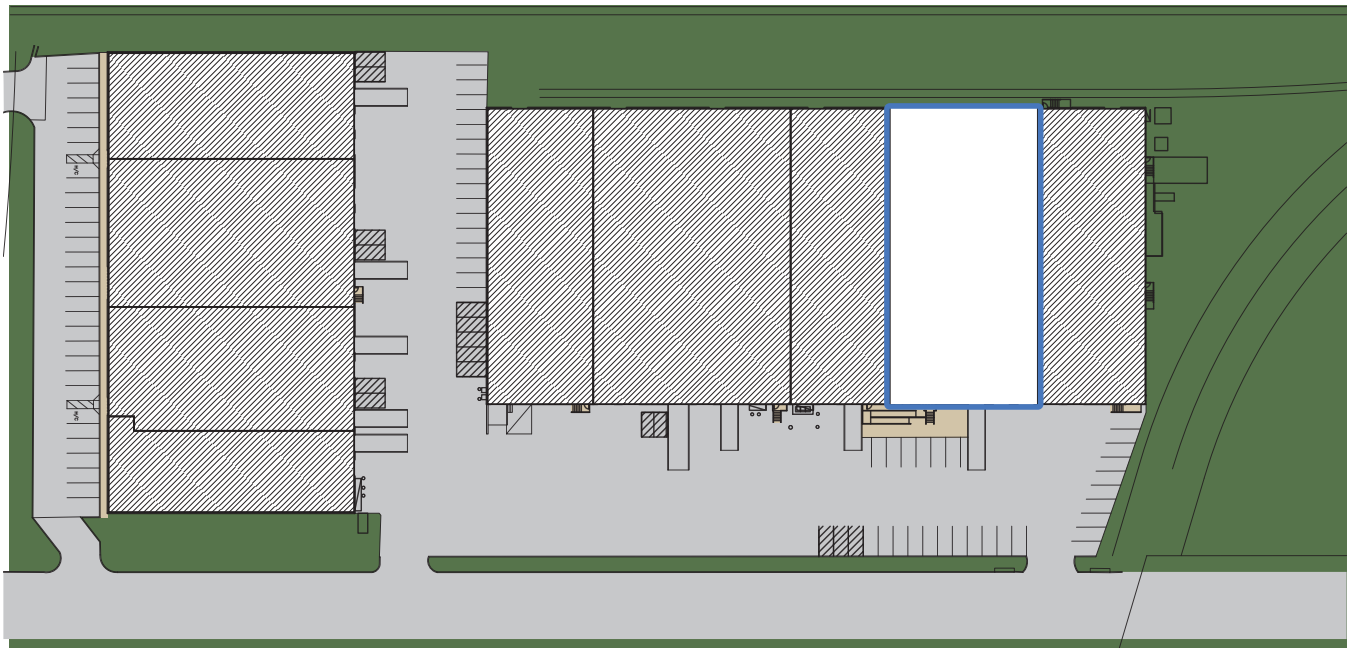
Brooks Benkendorfer
brooksbenkendorfer@hpitx.com
(512) 848-2582

No warranty or representation, expressed or implied, is made as to the accuracy of the information contained herein, and same is submitted subject to errors, omissions, change of price, rental or other conditions, withdrawal without notice, and to any special listing conditions imposed by the principals.

Rutland 2

10220 Metropolitan Drive - Austin, TX 78758

Suite D
16,200 SF
Bulk Warehouse



Davis Bass
bass@hpitx.com
(512) 203-5130

Brooks Benkendorfer
brooks@hpitx.com
(512) 848-2582

No warranty or representation, expressed or implied, is made as to the accuracy of the information contained herein, and same is submitted subject to errors, omissions, change of price, rental or other conditions, withdrawal without notice, and to any special listing conditions imposed by the principals.