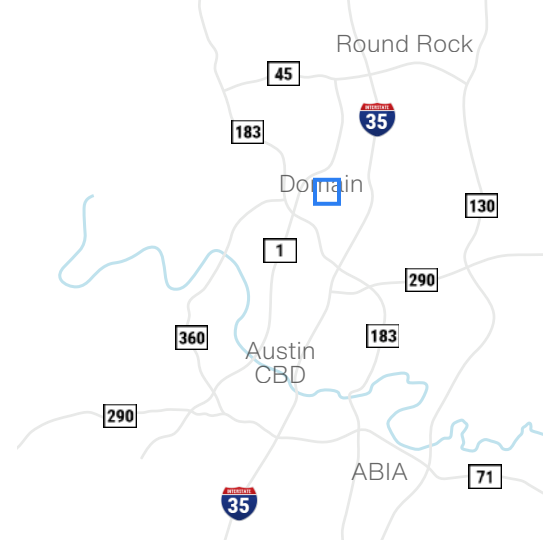


Rutland 3

10201 Metropolitan Drive - Austin, TX 78758

26,849 SF Bulk Warehouse



Available Suites

Suite 10201 - 26,849 SF

Building Features



Bulk Warehouse Space



5% Office



18'-20' Clear Height



**Front Loading,
4 Dock High Doors**



1 Loading Ramp



Davis Bass
bass@hpitx.com
(512) 203-5130

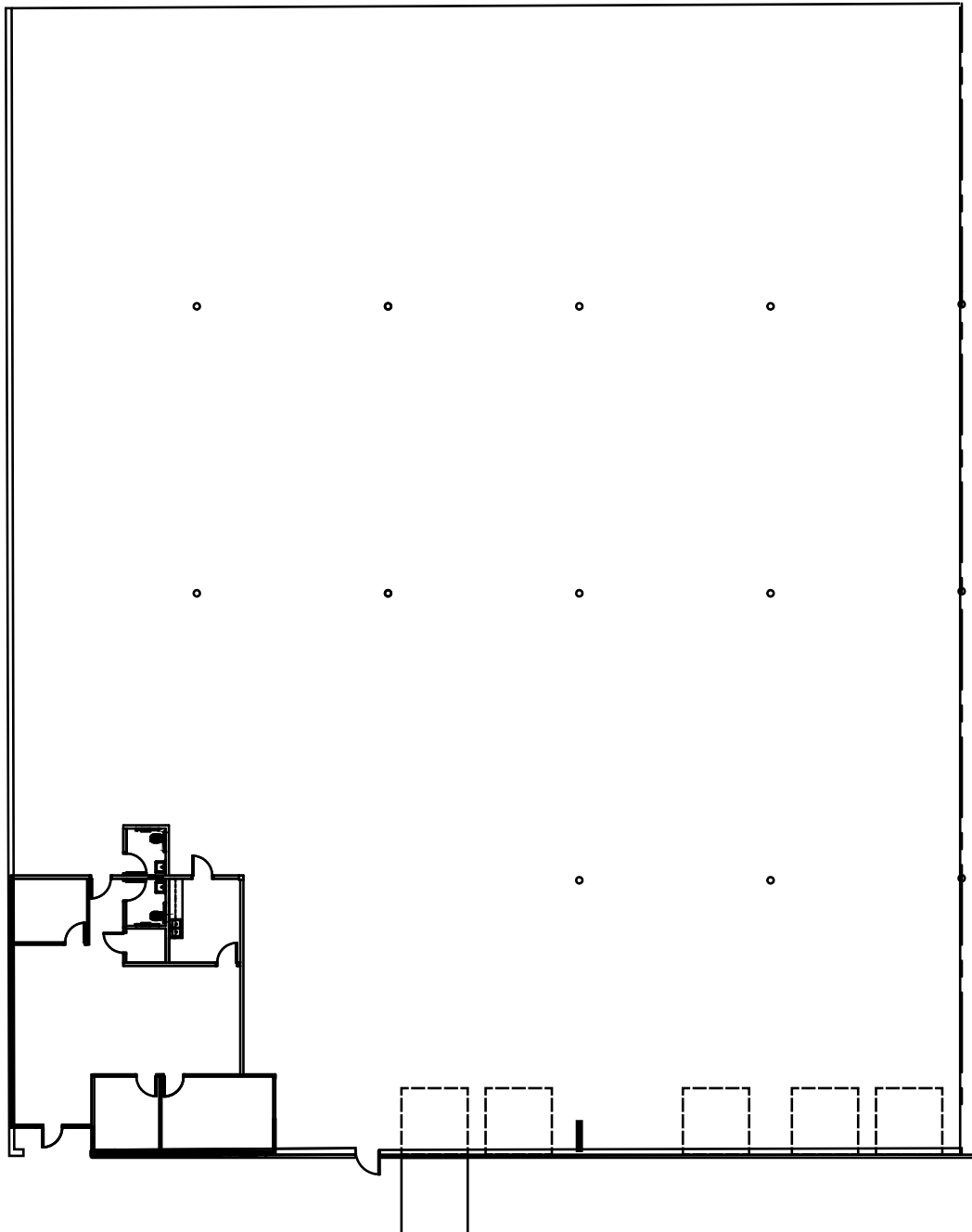
Brooks Benkendorfer
brooks@hpitx.com
(512) 848-2582

No warranty or representation, expressed or implied, is made as to the accuracy of the information contained herein, and same is submitted subject to errors, omissions, change of price, rental or other conditions, withdrawal without notice, and to any special listing conditions imposed by the principals.

Rutland 3

10201 Metropolitan Drive - Austin, TX 78758

Suite 10201
26,849 SF
Bulk Warehouse



Davis Bass
bass@hpitx.com
(512) 203-5130

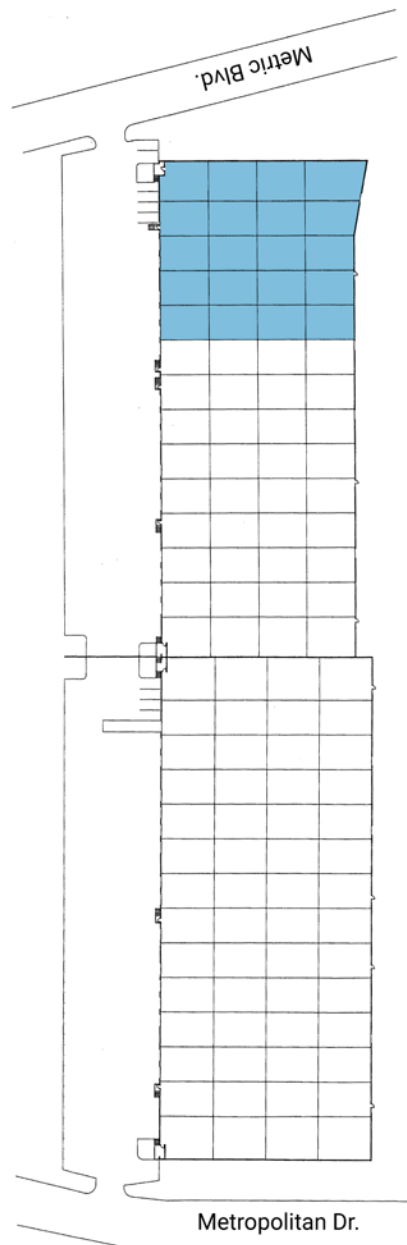
Brooks Benkendorfer
brooks@hpitx.com
(512) 848-2582

No warranty or representation, expressed or implied, is made as to the accuracy of the information contained herein, and same is submitted subject to errors, omissions, change of price, rental or other conditions, withdrawal without notice, and to any special listing conditions imposed by the principals.

Rutland 3

10201 Metropolitan Drive - Austin, TX 78758

Suite 10201
26,849 SF
Bulk Warehouse



Davis Bass
bass@hpitx.com
(512) 203-5130

Brooks Benkendorfer
brooksb@hpitx.com
(512) 848-2582

No warranty or representation, expressed or implied, is made as to the accuracy of the information contained herein, and same is submitted subject to errors, omissions, change of price, rental or other conditions, withdrawal without notice, and to any special listing conditions imposed by the principals.