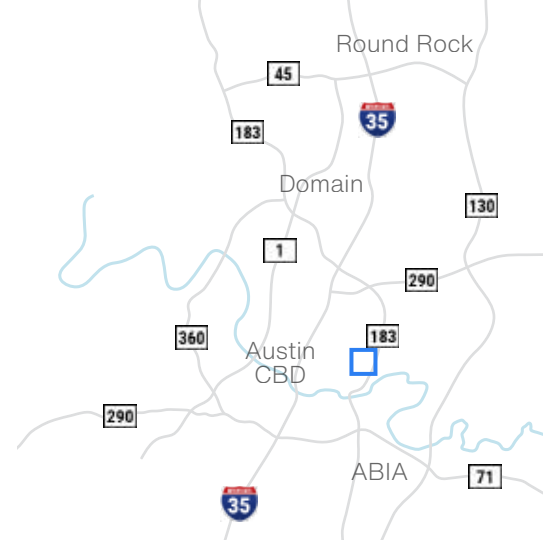


Techni Center

6013 Techni Center Drive - Austin, TX 78721

44,138 SF
Office/Warehouse



Available Suites

Suite 200 - **44,138 SF**

Available Now

Building Features



75% Warehouse



25% Office



16' Clear Height



11 Dock High Doors



**3 Grade Level
Dock Doors**



Oversize Dock Doors



Davis Bass
bass@hpitx.com
(512) 203-5130

Brooks Benkendorfer
brooksb@hpitx.com
(512) 848-2582

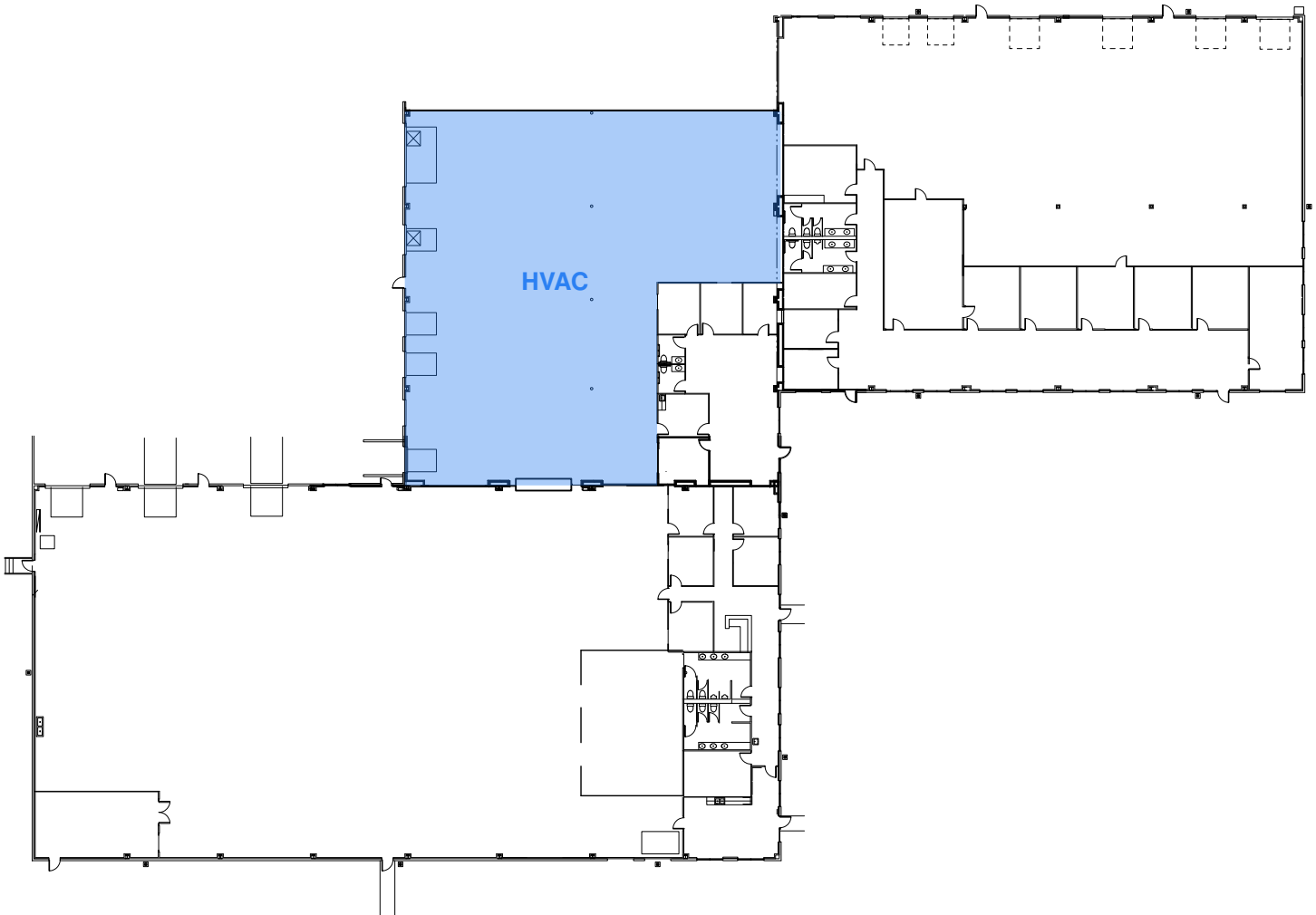
Will Thomas
wthomas@hpitx.com
(512) 835-4455

No warranty or representation, expressed or implied, is made as to the accuracy of the information contained herein, and same is submitted subject to errors, omissions, change of price, rental or other conditions, withdrawal without notice, and to any special listing conditions imposed by the principals.

Techni Center

6013 Techni Center Drive - Austin, TX 78721

Suite 200
44,138 SF
Office/Warehouse



Davis Bass
bass@hpitx.com
(512) 203-5130

Brooks Benkendorfer
brooksb@hpitx.com
(512) 848-2582

Will Thomas
wthomas@hpitx.com
(512) 835-4455

No warranty or representation, expressed or implied, is made as to the accuracy of the information contained herein, and same is submitted subject to errors, omissions, change of price, rental or other conditions, withdrawal without notice, and to any special listing conditions imposed by the principals.