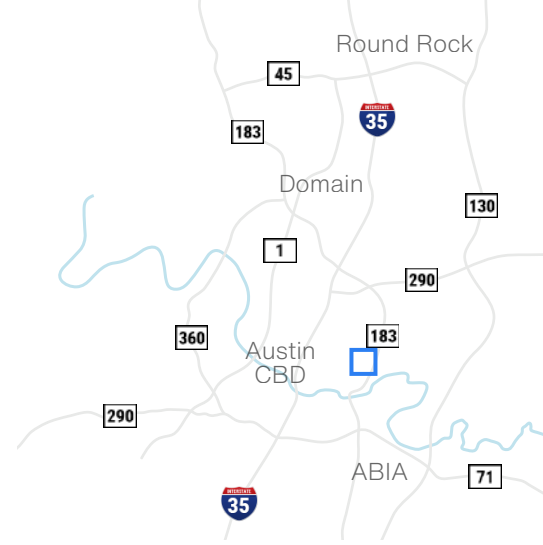


# Techni Center

6013 Techni Center Drive - Austin, TX 78721

**29,850 SF**  
**Office/Warehouse**



Available Suites

**Suite A - 29,850 SF**

Available Now

## Building Features



**85% Warehouse**



**15% Office**



**20' Clear Height**



**1 Double-Wide Dock High Door**



**3 Oversized Dock High Doors**



**3 Oversized Drive-In Doors**



**1 Dock High Door**



**Davis Bass**  
bass@hpitx.com  
(512) 203-5130

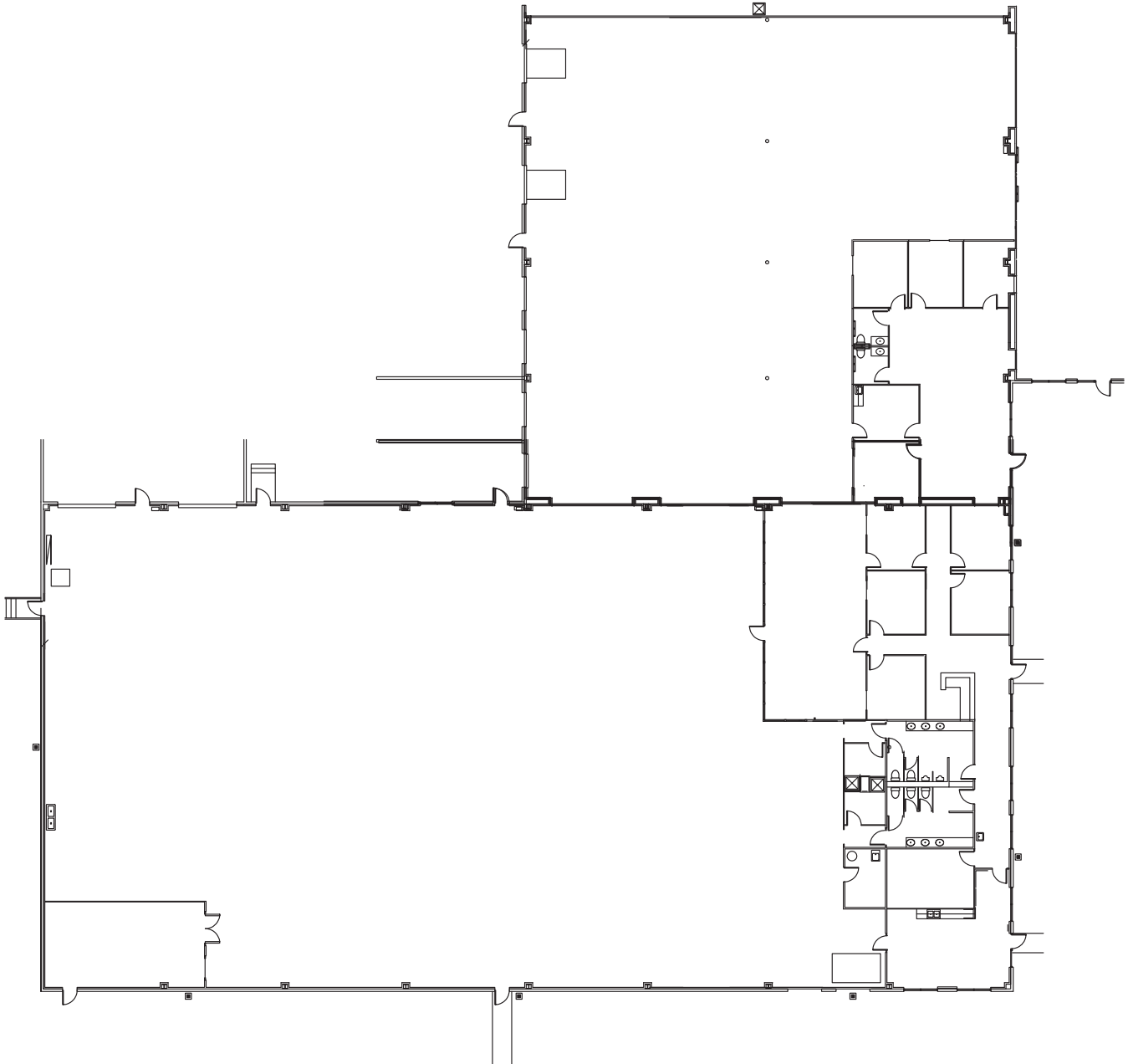
**Brooks Benkendorfer**  
brooks@hpitx.com  
(512) 848-2582

No warranty or representation, expressed or implied, is made as to the accuracy of the information contained herein, and same is submitted subject to errors, omissions, change of price, rental or other conditions, withdrawal without notice, and to any special listing conditions imposed by the principals.

# Techni Center

6013 Techni Center Drive - Austin, TX 78721

**Suite A**  
**29,850 SF**  
**Office/Warehouse**



**Davis Bass**  
bass@hpitx.com  
(512) 203-5130

**Brooks Benkendorfer**  
brooks@hpitx.com  
(512) 848-2582

No warranty or representation, expressed or implied, is made as to the accuracy of the information contained herein, and same is submitted subject to errors, omissions, change of price, rental or other conditions, withdrawal without notice, and to any special listing conditions imposed by the principals.