

DOMAINPLACE



Richard Paddock
(512) 538-0057
paddock@hpitx.com

J.D. Lewis
(512) 538-0064
jdlewis@hpitx.com

Owned + Thoughtfully Developed By



Available Space

Suite 110
3,541 SF

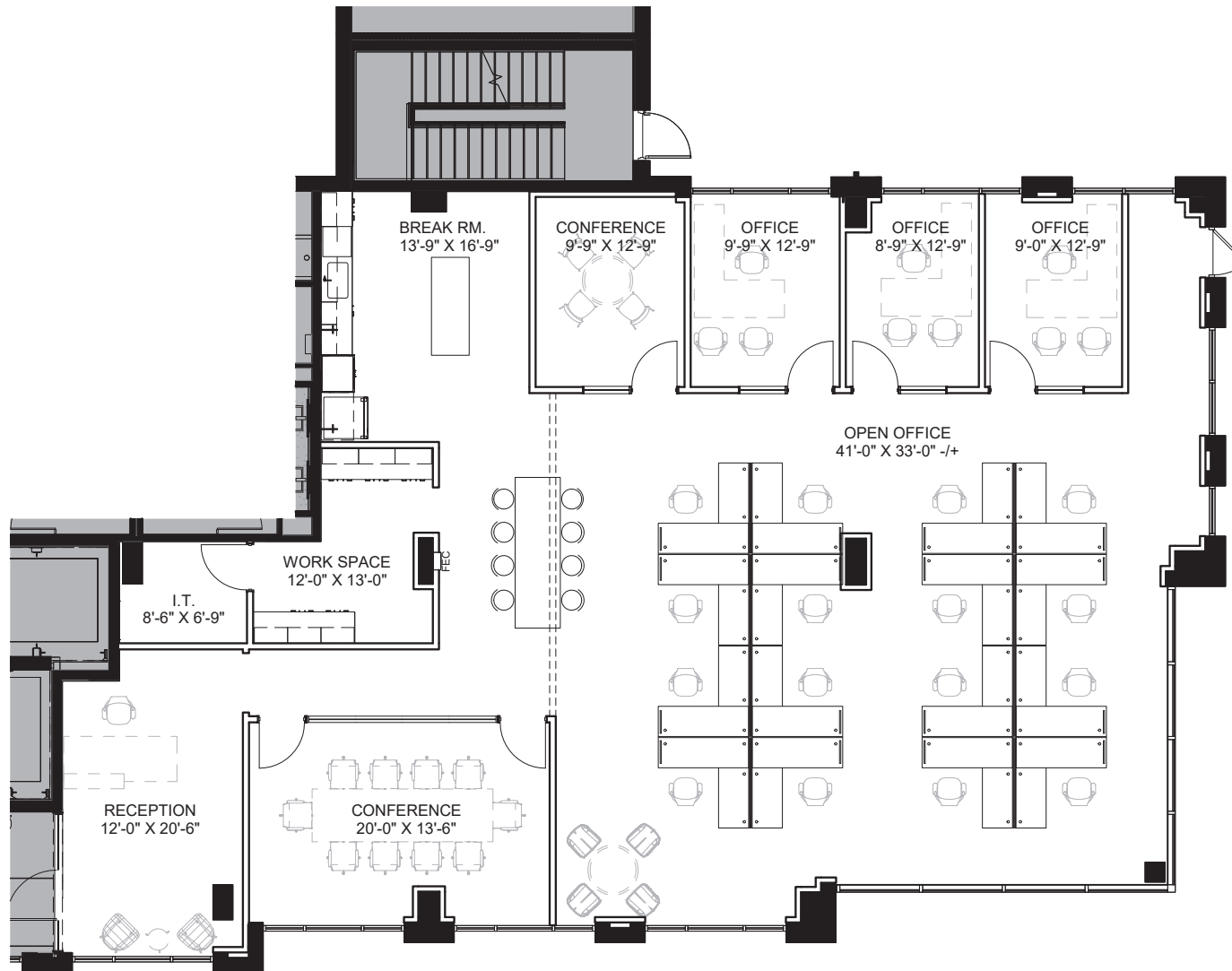
Available Dec. 24

Parking

3.5:1000

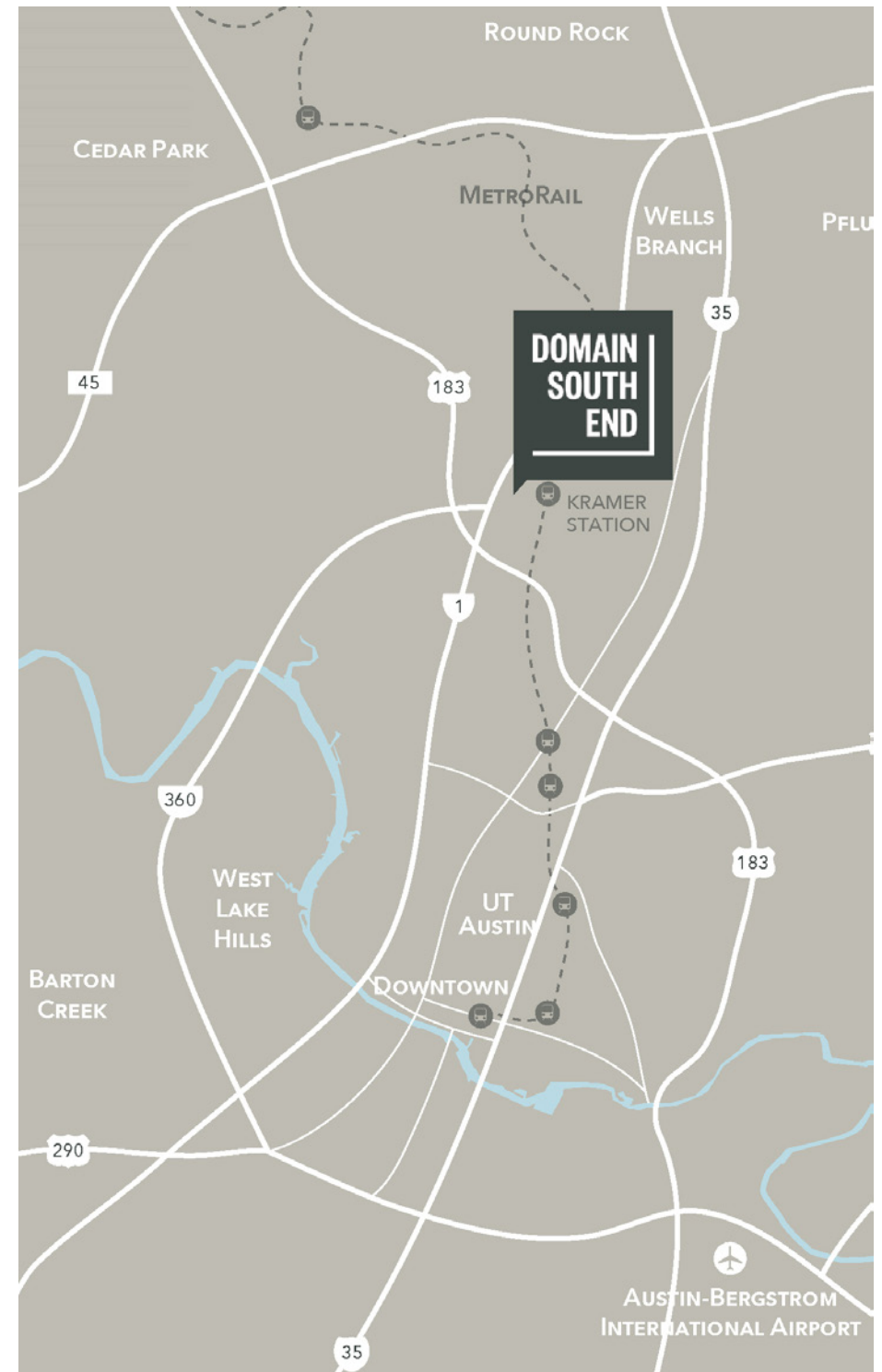
Other Features

**Tall-Exterior Windows,
Walking Distance to Numerous Dining and Retail Shops,
High-End Finishes In Place**



Working & Living In Austin's Second Downtown

Domain Place tenants will be front and center in Austin's Domain District, a vibrant community that is home to many of Austin's most popular dining, retail, and entertainment venues. This self-sufficient community gives tenants an edge in attracting top-talent employees who put a high priority on the work, play, live setting. For commuting employees, short routes in and out of the Domain make for quicker commute times. While nearby transit hubs provide alternative commuting options by bus or rail.







DOMAINPLACE



Richard Paddock
(512) 538-0057
paddock@hpitx.com

J.D. Lewis
(512) 538-0064
jdlewis@hpitx.com

Owned + Thoughtfully Developed By

