

Travis South

13338 Old San Antonio Rd, Manchaca, TX 78652

±20,000 to ±181,000 SF Bulk Warehouse For Sale or Lease

BTS Options Available



Site Wide Features



Class A Industrial



ESFR Sprinklers



Dock High Doors



ETJ Location



32' Clear Height



**Quick Access
I-35 Frontage
and TX-45**

HPI

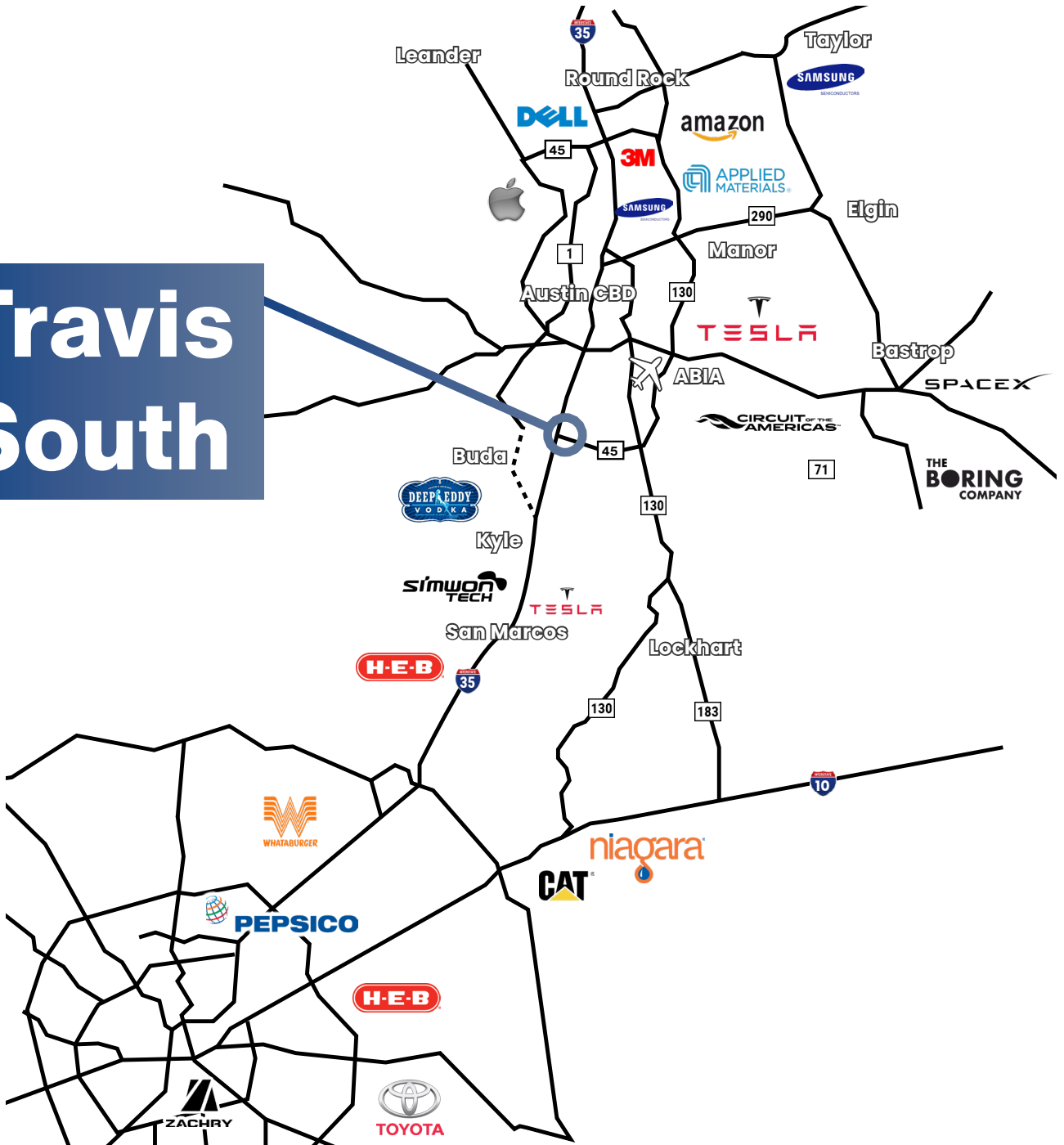
S
W

**STILLWATER
CAPITAL**

Travis South Location

13338 Old San Antonio Rd, Manchaca, TX 78652

**Travis
South**



Davis Bass
bass@hpitx.com
(512) 203-5130

Brooks Benkendorfer
brooksb@hpitx.com
(512) 848-2582

Will Thomas
wthomas@hpitx.com
(512) 835-4455

No warranty or representation, expressed or implied, is made as to the accuracy of the information contained herein, and same is submitted subject to errors, omissions, change of price, rental or other conditions, withdrawal without notice, and to any special listing conditions imposed by the principals.

Travis South

Ingress/Egress

13338 Old San Antonio Rd, Manchaca, TX 78652



Davis Bass
bass@hpitx.com
(512) 203-5130

Brooks Benkendorfer
brooksb@hpitx.com
(512) 848-2582

Will Thomas
wthomas@hpitx.com
(512) 835-4455

No warranty or representation, expressed or implied, is made as to the accuracy of the information contained herein, and same is submitted subject to errors, omissions, change of price, rental or other conditions, withdrawal without notice, and to any special listing conditions imposed by the principals.

Travis South

Site Map

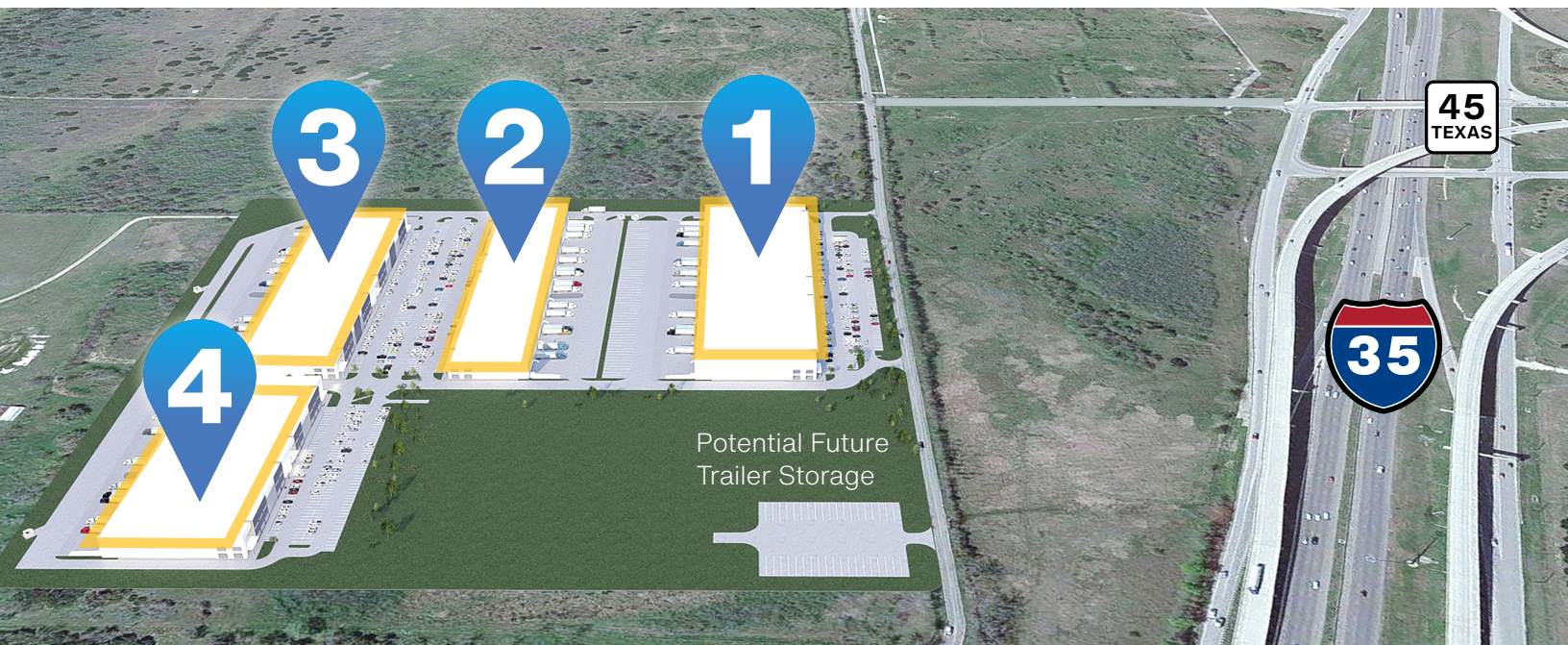
13338 Old San Antonio Rd, Manchaca, TX 78652

Building **1** - **181,815 SF** - Under Construction

Building **2** - **121,297 SF** - Under Construction

Building **3** - **147,757 SF** - Available for BTS

Building **4** - **125,190 SF** - Available for BTS



Davis Bass
bass@hpitx.com
(512) 203-5130

Brooks Benkendorfer
brooksb@hpitx.com
(512) 848-2582

Will Thomas
wthomas@hpitx.com
(512) 835-4455

No warranty or representation, expressed or implied, is made as to the accuracy of the information contained herein, and same is submitted subject to errors, omissions, change of price, rental or other conditions, withdrawal without notice, and to any special listing conditions imposed by the principals.

Travis South Building 1

Building SF **181,815**

Spec Office SF **3,419**

Clear Height **32'**

Building Dimensions **240' x 756'**

Configuration **Rear Load**

Construction **Tilt Wall**

Column Spacing **54' x 60'**

Speed Bay Spacing **54' x 60'**

Truck Court Depth **185'**

Dock Doors **44**

Drive-In Doors **2**

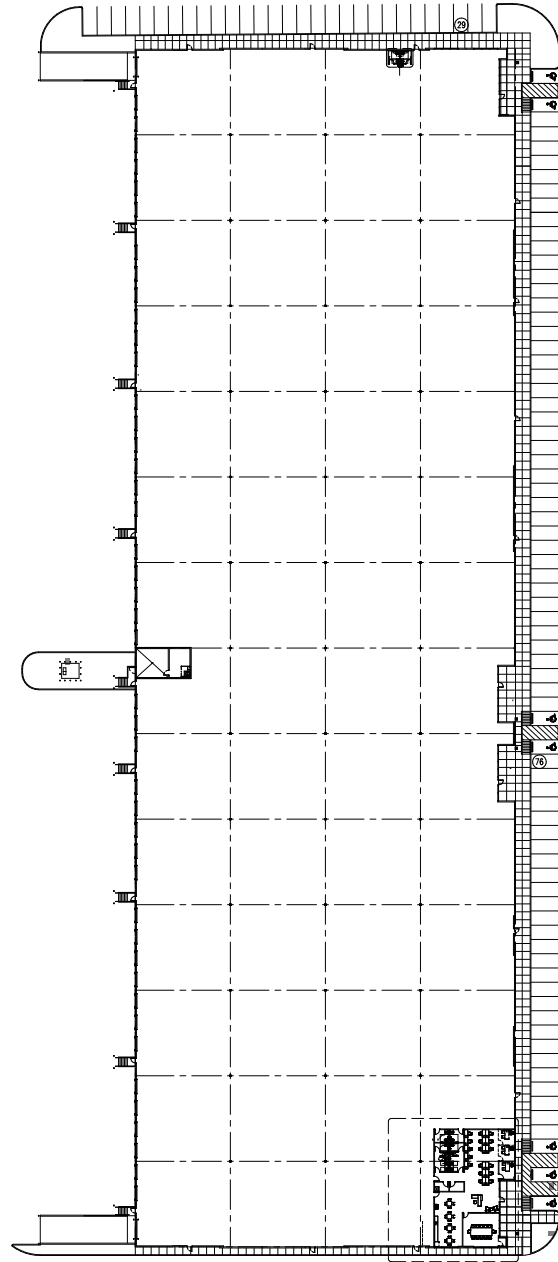
Trailer Parking **62**

Auto Parking **297**

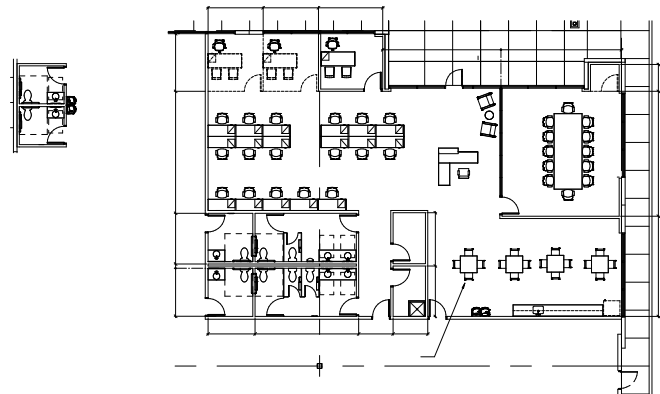
Fire Protection **ESFR**

*Power **2500 KVA,
277/480V**

*Additional Power Capacity Available
Upon Request



Spec Office —



Davis Bass
bass@hpitx.com
(512) 203-5130

Brooks Benkendorfer
brooks@hpitx.com
(512) 848-2582

Will Thomas
wthomas@hpitx.com
(512) 835-4455

No warranty or representation, expressed or implied, is made as to the accuracy of the information contained herein, and same is submitted subject to errors, omissions, change of price, rental or other conditions, withdrawal without notice, and to any special listing conditions imposed by the principals.

Travis South Building 2

Building SF **121,297**

Spec Office SF **5,046**

Clear Height **32'**

Building Dimensions **160' x 756'**

Configuration **Rear Load**

Construction **Tilt Wall**

Collumn Spacing **54' x 50'**

Speed Bay Spacing **54' x 60'**

Truck Cort Depth **130'**

Dock Doors **44**

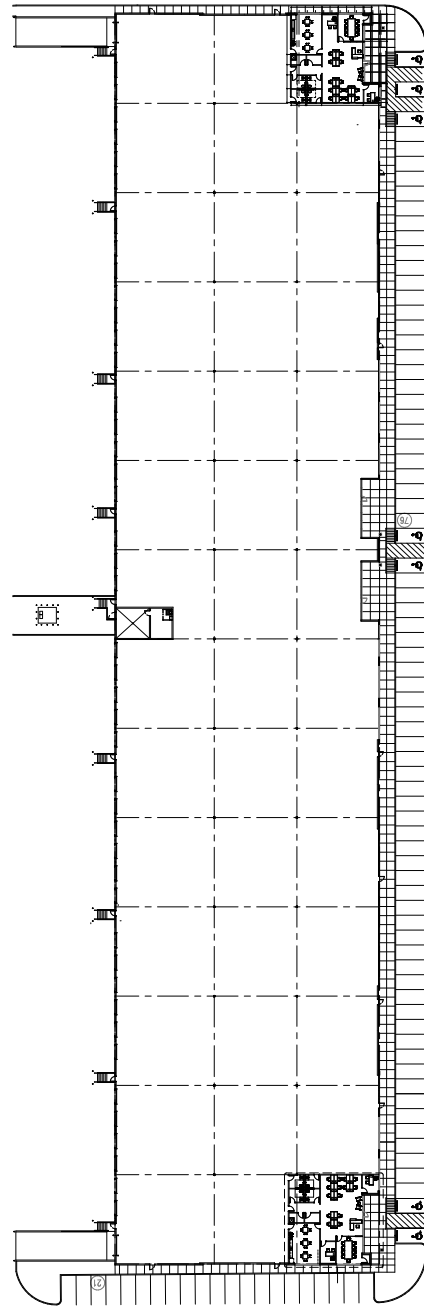
Drive-In Doors **2**

Auto Parking **261**

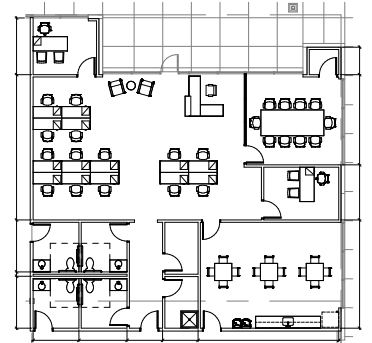
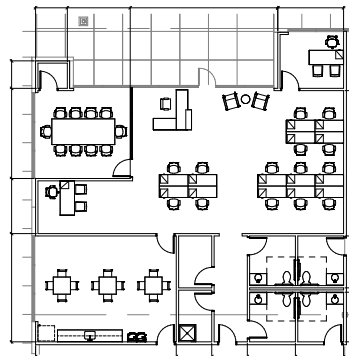
Fire Protection **ESFR**

Power **2500 KVA,
277/480V**

*Additional Power Capacity Available
Upon Request



Spec Office —



Davis Bass
bass@hpitx.com
(512) 203-5130

Brooks Benkendorfer
brooksb@hpitx.com
(512) 848-2582

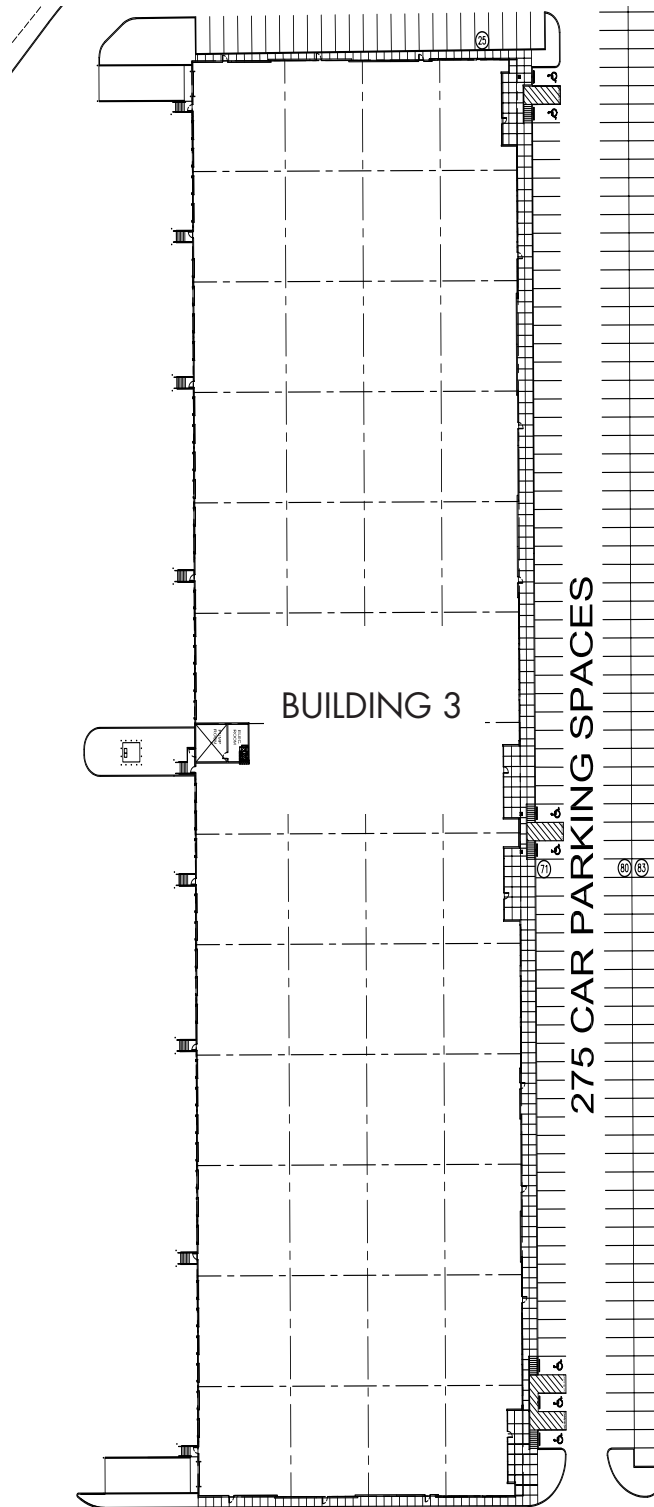
Will Thomas
wthomas@hpitx.com
(512) 835-4455

No warranty or representation, expressed or implied, is made as to the accuracy of the information contained herein, and same is submitted subject to errors, omissions, change of price, rental or other conditions, withdrawal without notice, and to any special listing conditions imposed by the principals.

Travis South Building 3

Building SF	147,757
Clear Height	32'
Building Dimensions	210' x 702'
Configuration	Rear Load
Construction	Tilt Wall
Column Spacing	54' x 50'
Speed Bay Spacing	54' x 60'
Truck Court Depth	130'
Dock Doors	40
Drive-In Doors	2
Auto Parking	275
Fire Protection	ESFR
Power	2500 KVA, 277/480V

*Additional Power Capacity Available
Upon Request



Davis Bass
bass@hpitx.com
(512) 203-5130

Brooks Benkendorfer
brooks@hpitx.com
(512) 848-2582

Will Thomas
wthomas@hpitx.com
(512) 835-4455

No warranty or representation, expressed or implied, is made as to the accuracy of the information contained herein, and same is submitted subject to errors, omissions, change of price, rental or other conditions, withdrawal without notice, and to any special listing conditions imposed by the principals.

Travis South Building 4

Building SF **125,190**

Clear Height **32'**

Building Dimensions **240' x 520'**

Configuration **Rear Load**

Construction **Tilt Wall**

Column Spacing **54' x 60'**

Speed Bay Spacing **54' x 60'**

Truck Court Depth **130'**

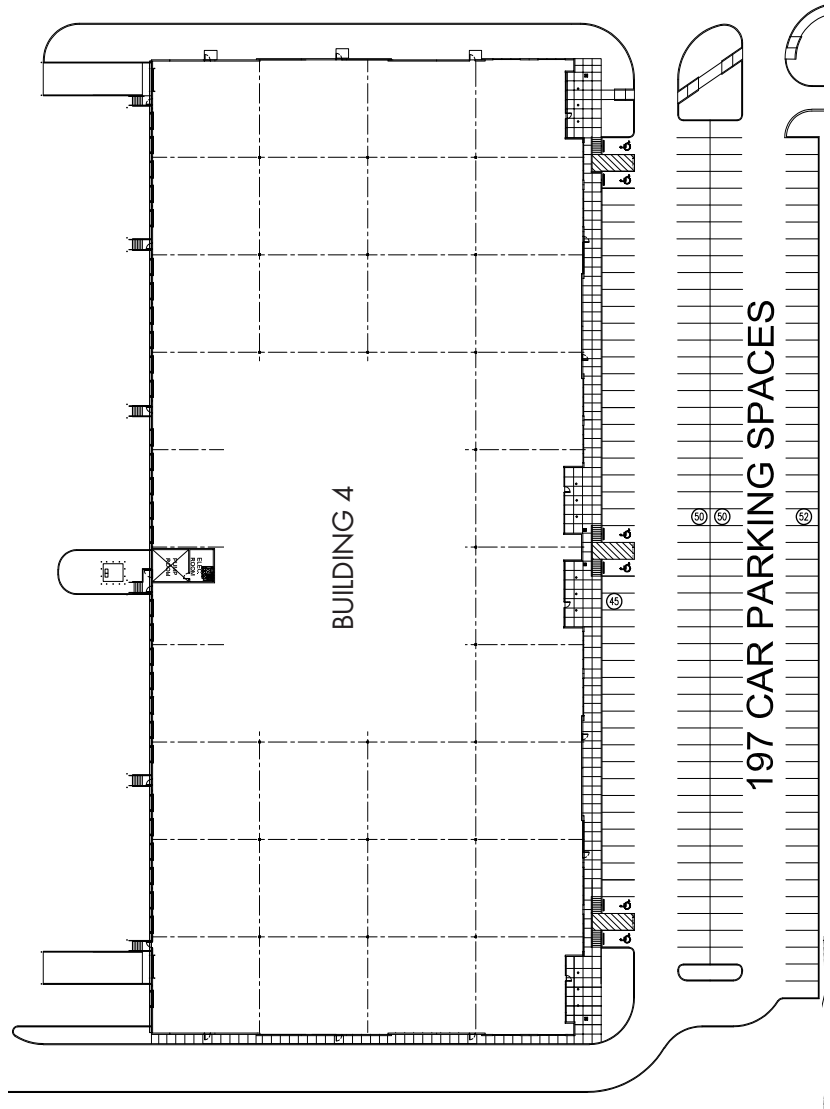
Dock Doors **30**

Drive-In Doors **2**

Auto Parking **197**

Fire Protection **ESFR**

Power **2500 KVA,
277/480V**



*Additional Power Capacity Available
Upon Request



Davis Bass
bass@hpitx.com
(512) 203-5130

Brooks Benkendorfer
brooks@hpitx.com
(512) 848-2582

Will Thomas
wthomas@hpitx.com
(512) 835-4455

No warranty or representation, expressed or implied, is made as to the accuracy of the information contained herein, and same is submitted subject to errors, omissions, change of price, rental or other conditions, withdrawal without notice, and to any special listing conditions imposed by the principals.