

CENTRAL TEXAS LOGISTICS CENTER

1600 Clovis R Barker Road, San Marcos, TX 78666

Industrial Space Bulk Warehouse



AVAILABLE SUITES

Suite 202

14,850 SF

BUILDING FEATURES



Bulk Warehouse



15% Office



4,000 SF of Yard



3 Dock High Doors



**2 Oversized
Grade Level Doors**



24' Clear Height



**Located in San Marcos,
between Austin & San
Antonio**

OWNED BY:
Triten
REAL ESTATE PARTNERS

HPI

Davis Bass
bass@hpitx.com
(512) 203-5130

Brooks Benkendorfer
brooks@hpitx.com
(512) 848-2582

Will Thomas
wthomas@hpitx.com
(512) 835-4455

No warranty or representation, expressed or implied, is made as to the accuracy of the information contained herein, and same is submitted subject to errors, omissions, change of price, rental or other conditions, withdrawal without notice, and to any special listing conditions imposed by the principals.

CENTRAL TEXAS LOGISTICS CENTER

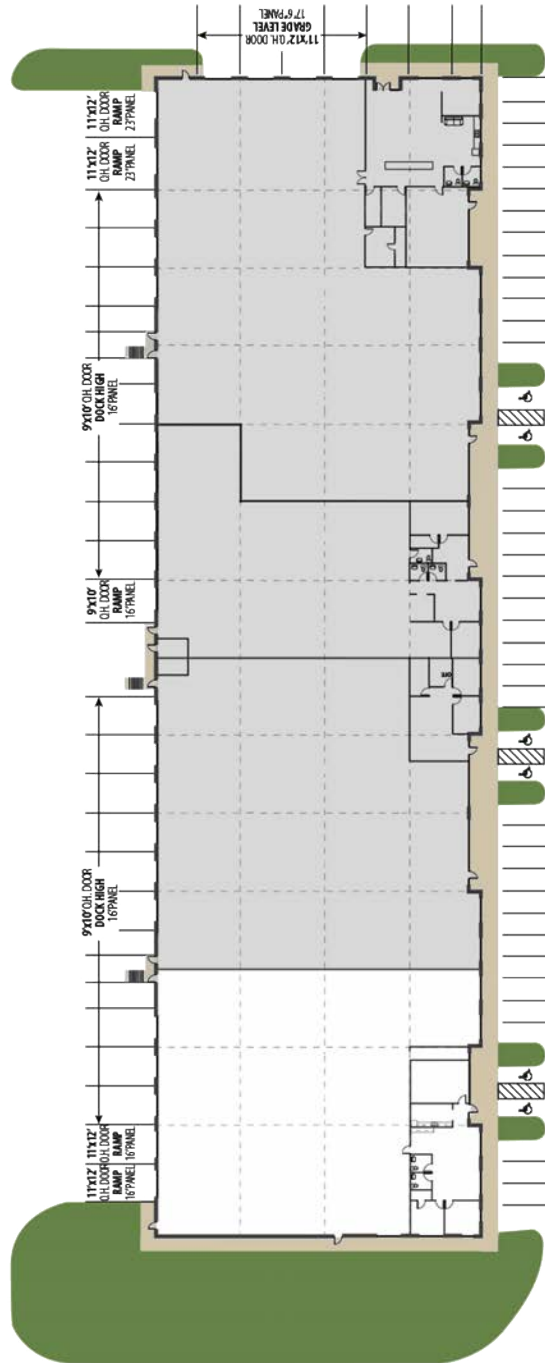
1600 Clovis R Barker Road, San Marcos, TX 78666

Suite 202 14,850 SF



CENTRAL TEXAS LOGISTICS CENTER

Suite 202 14,850 SF



CENTRAL TEXAS LOGISTICS CENTER

1600 Clovis R Barker Road, San Marcos, TX 78666

Suite Location



Central Texas
Logistics Center

amazon
Fulfillment Center

H-E-B
Distribution Center

TEXAS
STATE

Downtown Austin
(35 mins.)

Guadalupe St

Clovis R Barker Rd

OWNED BY:
Triten
REAL ESTATE PARTNERS

HPI

Davis Bass
bass@hpitx.com
(512) 203-5130

Brooks Benkendorfer
brooks@hpitx.com
(512) 848-2582

Will Thomas
wthomas@hpitx.com
(512) 835-4455

No warranty or representation, expressed or implied, is made as to the accuracy of the information contained herein, and same is submitted subject to errors, omissions, change of price, rental or other conditions, withdrawal without notice, and to any special listing conditions imposed by the principals.

CENTRAL TEXAS LOGISTICS CENTER

1600 Clovis R Barker Road, San Marcos, TX 78666

Ingress/Egress Map

