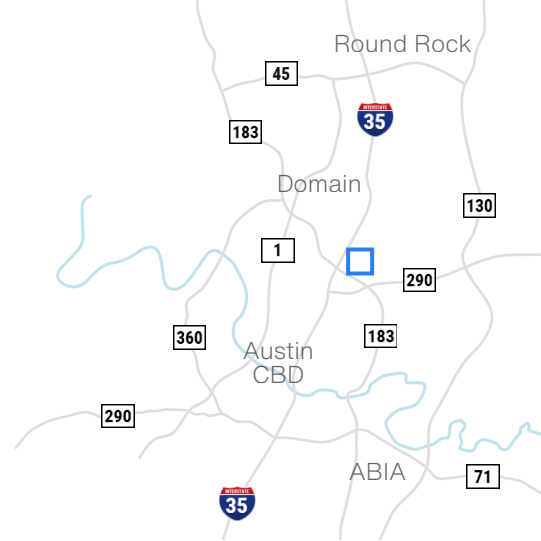


Cameron Road Corporate Park I

1130 Rutherford Lane, Austin, TX 78753

13,350 SF
Office/Warehouse



Available Suites

Suite 190 - 13,350 SF

Building Features



100% Conditioned Warehouse



30% Office/Showroom



24' Clear Height



4 Dock-High Doors



1 Ramp



End Cap Suite



Davis Bass
bass@hpitx.com
(512) 203-5130

Brooks Benkendorfer
brooksbenkendorfer@hpitx.com
(512) 848-2582

Will Thomas
wthomas@hpitx.com
(512) 835-4455

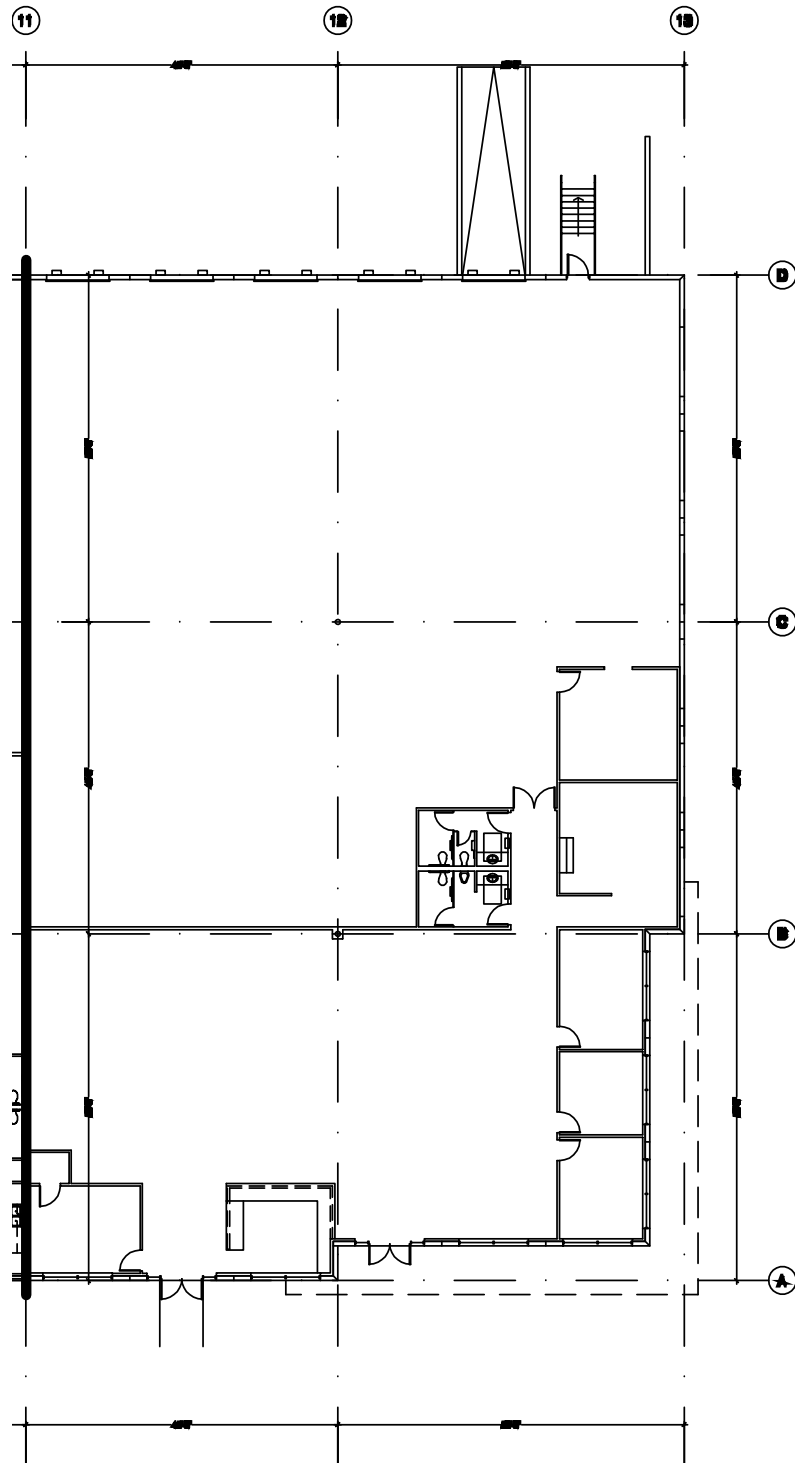
No warranty or representation, expressed or implied, is made as to the accuracy of the information contained herein, and same is submitted subject to errors, omissions, change of price, rental or other conditions, withdrawal without notice, and to any special listing conditions imposed by the principals.

Cameron Road Corporate Park II

1130 Rutherford Lane, Austin, TX 78753

Suite 190

13,350 SF
Office/Warehouse



Davis Bass
bass@hpitx.com
(512) 203-5130

Brooks Benkendorfer
brooks@hpitx.com
(512) 848-2582

Will Thomas
wthomas@hpitx.com
(512) 835-4455

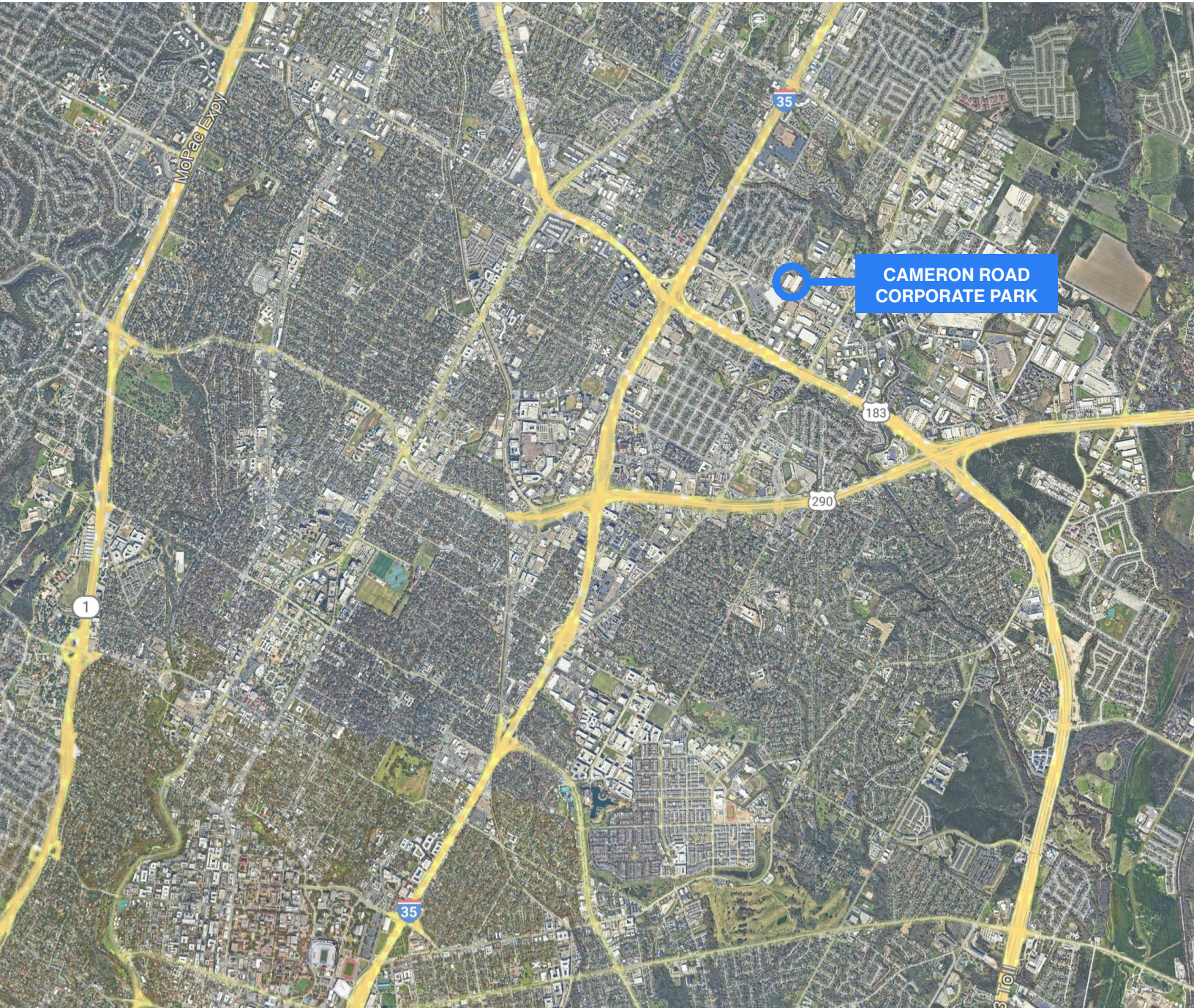
No warranty or representation, expressed or implied, is made as to the accuracy of the information contained herein, and same is submitted subject to errors, omissions, change of price, rental or other conditions, withdrawal without notice, and to any special listing conditions imposed by the principals.

Cameron Road Corporate Park II

1130 Rutherford Lane, Austin, TX 78753

Suite 190

13,350 SF
Office/Warehouse



Davis Bass
bass@hpitx.com
(512) 203-5130

Brooks Benkendorfer
brooksb@hpitx.com
(512) 848-2582

Will Thomas
wthomas@hpitx.com
(512) 835-4455

No warranty or representation, expressed or implied, is made as to the accuracy of the information contained herein, and same is submitted subject to errors, omissions, change of price, rental or other conditions, withdrawal without notice, and to any special listing conditions imposed by the principals.