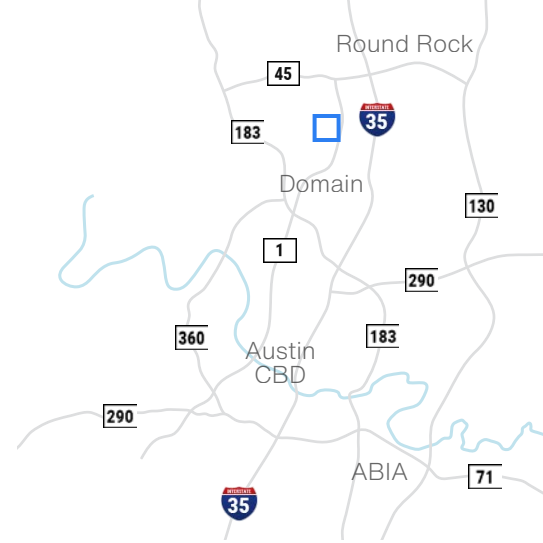


Northtech Business Center 9

4616 West Howard Lane - Austin, TX 78728

4,834 SF
Office/Warehouse Space



Available Suites

Suite 970 - 4,834 SF

Building Features



85% Office



15% Warehouse



24' Clear Height



**40' x 40'
Column Spacing**



120' Building Depth



**Rear Loading
1 Dock High Door**



ESFR Sprinklered



1 Loading Ramp



Davis Bass
bass@hpitx.com
(512) 203-5130

Brooks Benkendorfer
brooksb@hpitx.com
(512) 848-2582

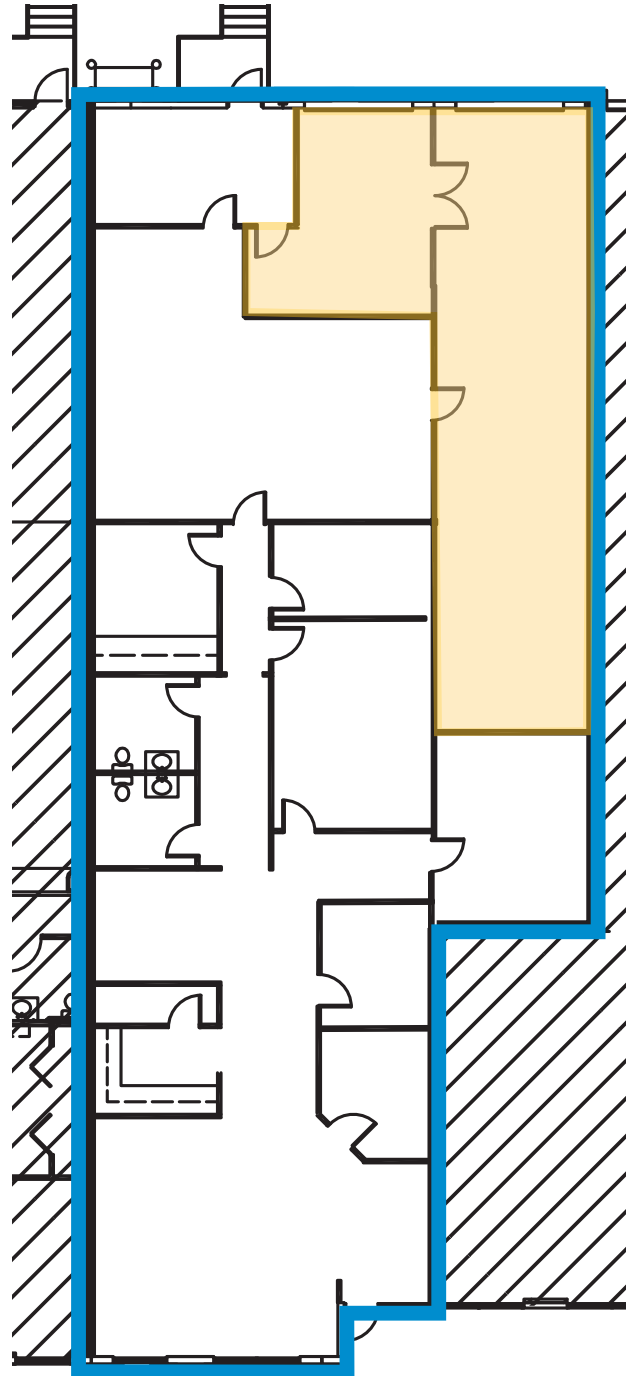
Will Thomas
wthomas@hpitx.com
(512) 835-4455

No warranty or representation, expressed or implied, is made as to the accuracy of the information contained herein, and same is submitted subject to errors, omissions, change of price, rental or other conditions, withdrawal without notice, and to any special listing conditions imposed by the principals.

Northtech Business Center 9

4616 West Howard Lane - Austin, TX 78728

Suite 970
4,834 SF
Office/Warehouse



Warehouse



Davis Bass
bass@hpitx.com
(512) 203-5130

Brooks Benkendorfer
brooksb@hpitx.com
(512) 848-2582

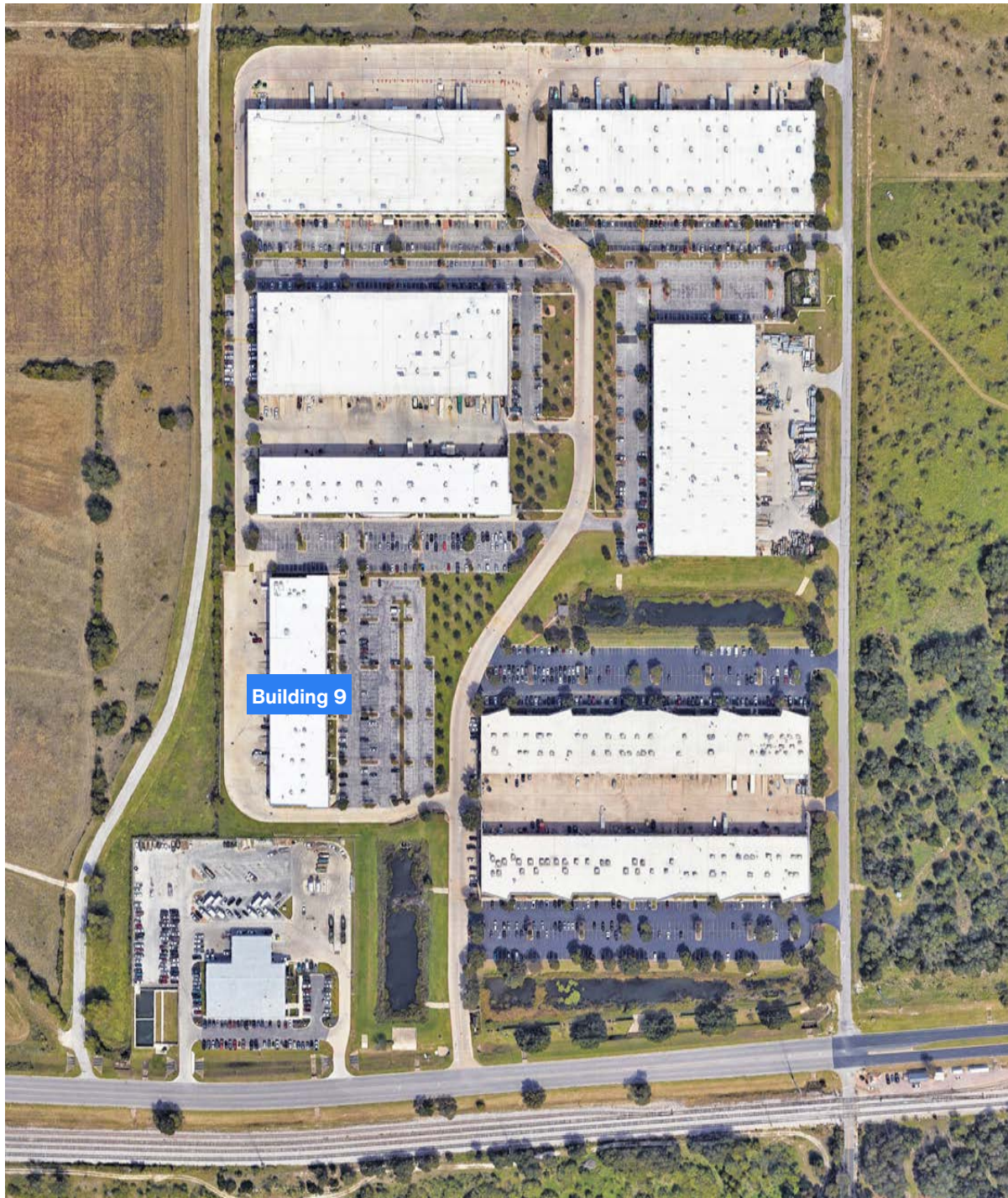
Will Thomas
wthomas@hpitx.com
(512) 835-4455

No warranty or representation, expressed or implied, is made as to the accuracy of the information contained herein, and same is submitted subject to errors, omissions, change of price, rental or other conditions, withdrawal without notice, and to any special listing conditions imposed by the principals.

Northtech Business Center 9

4616 West Howard Lane - Austin, TX 78728

Suite 970
4,834 SF
Office/Warehouse



Davis Bass
bass@hpitx.com
(512) 203-5130

Brooks Benkendorfer
brooks@hpitx.com
(512) 848-2582

Will Thomas
wthomas@hpitx.com
(512) 835-4455

No warranty or representation, expressed or implied, is made as to the accuracy of the information contained herein, and same is submitted subject to errors, omissions, change of price, rental or other conditions, withdrawal without notice, and to any special listing conditions imposed by the principals.