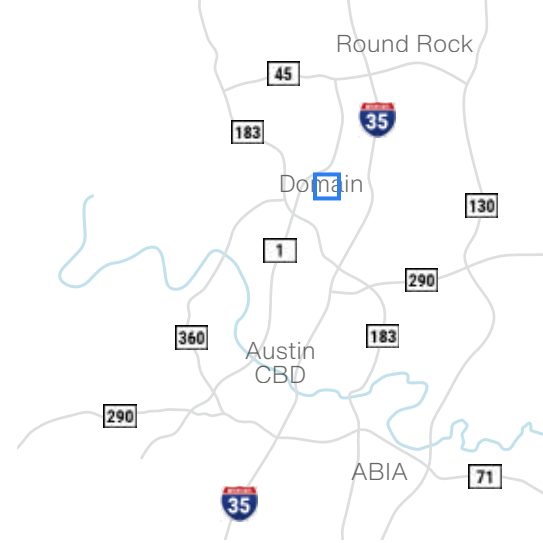


# Stonehollow 1

11525 Stonehollow Drive - Austin, TX 78758

**7,981 SF**  
**Office/Warehouse**



Available Suites

**Suite 150 - 7,981 SF**

## Building Features



**50% Office**  
**50% Warehouse**



**Rear Loading,**  
**4 Dock High Doors**



**24' Clear Height**



**Sits in North Austin**  
**- Home to many B2B**  
**Companies, Breweries,**  
**and Crossfit/Fitness**  
**Gyms**



**5 Mins. from Austin's**  
**Domain District**  
**•50+ Restaurants**  
**•775+ Hotel Rooms**  
**•2,700+ Apt. Units**



**Davis Bass**  
bass@hpitx.com  
(512) 203-5130

**Brooks Benkendorfer**  
brooks@hpitx.com  
(512) 848-2582

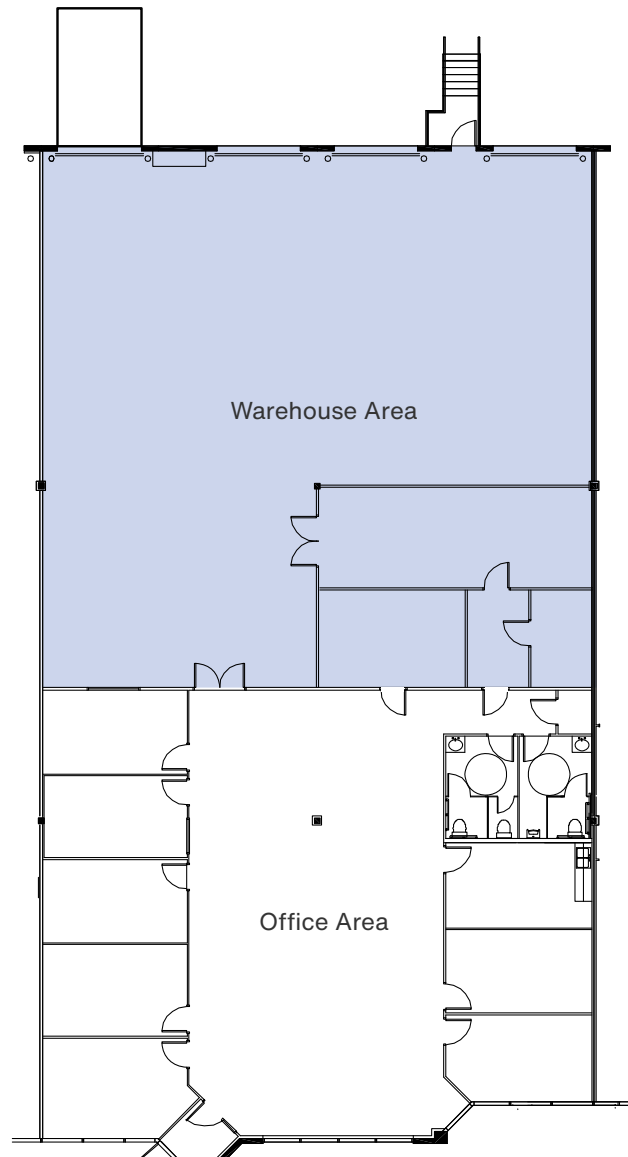
**Will Thomas**  
wthomas@hpitx.com  
(512) 835-4455

No warranty or representation, expressed or implied, is made as to the accuracy of the information contained herein, and same is submitted subject to errors, omissions, change of price, rental or other conditions, withdrawal without notice, and to any special listing conditions imposed by the principals.

# Stonehollow 1

11525 Stonehollow Drive - Austin, TX 78758

**Suite 150**  
**7,981 SF**  
**Office/Warehouse**



**Davis Bass**  
bass@hpitx.com  
(512) 203-5130

**Brooks Benkendorfer**  
brooksb@hpitx.com  
(512) 848-2582

**Will Thomas**  
wthomas@hpitx.com  
(512) 835-4455

No warranty or representation, expressed or implied, is made as to the accuracy of the information contained herein, and same is submitted subject to errors, omissions, change of price, rental or other conditions, withdrawal without notice, and to any special listing conditions imposed by the principals.