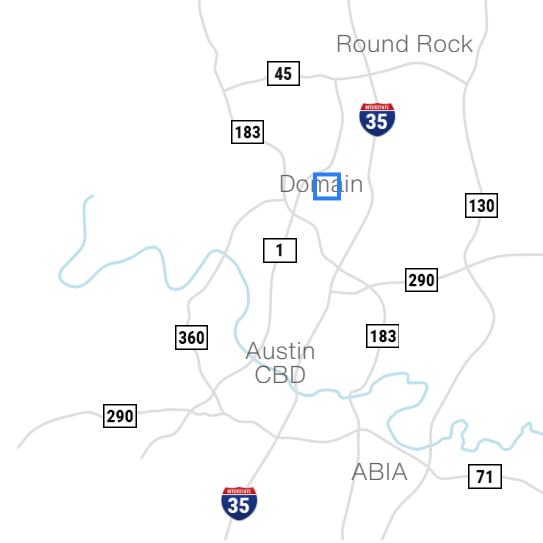


# Stonehollow 5

11801 Stonehollow Drive - Austin, TX 78758

## 15,592 SF Flex Office Space



Available Suites

**Suite 100 + 110 - 15,592 SF**

### Building Features



**Open, Flexible Office Space**



**Quick Access to Mopac, Hwy 183 and I-35**



**5 Mins. from Austin's Domain District**  
**-50+ Restaurants**  
**-775+ Hotel Rooms**  
**-2,700+ Apt. Units**



**Sits in North Austin - Home to many B2B Companies, Breweries, and Crossfit/Fitness Gyms**



**Davis Bass**  
bass@hpitx.com  
(512) 203-5130

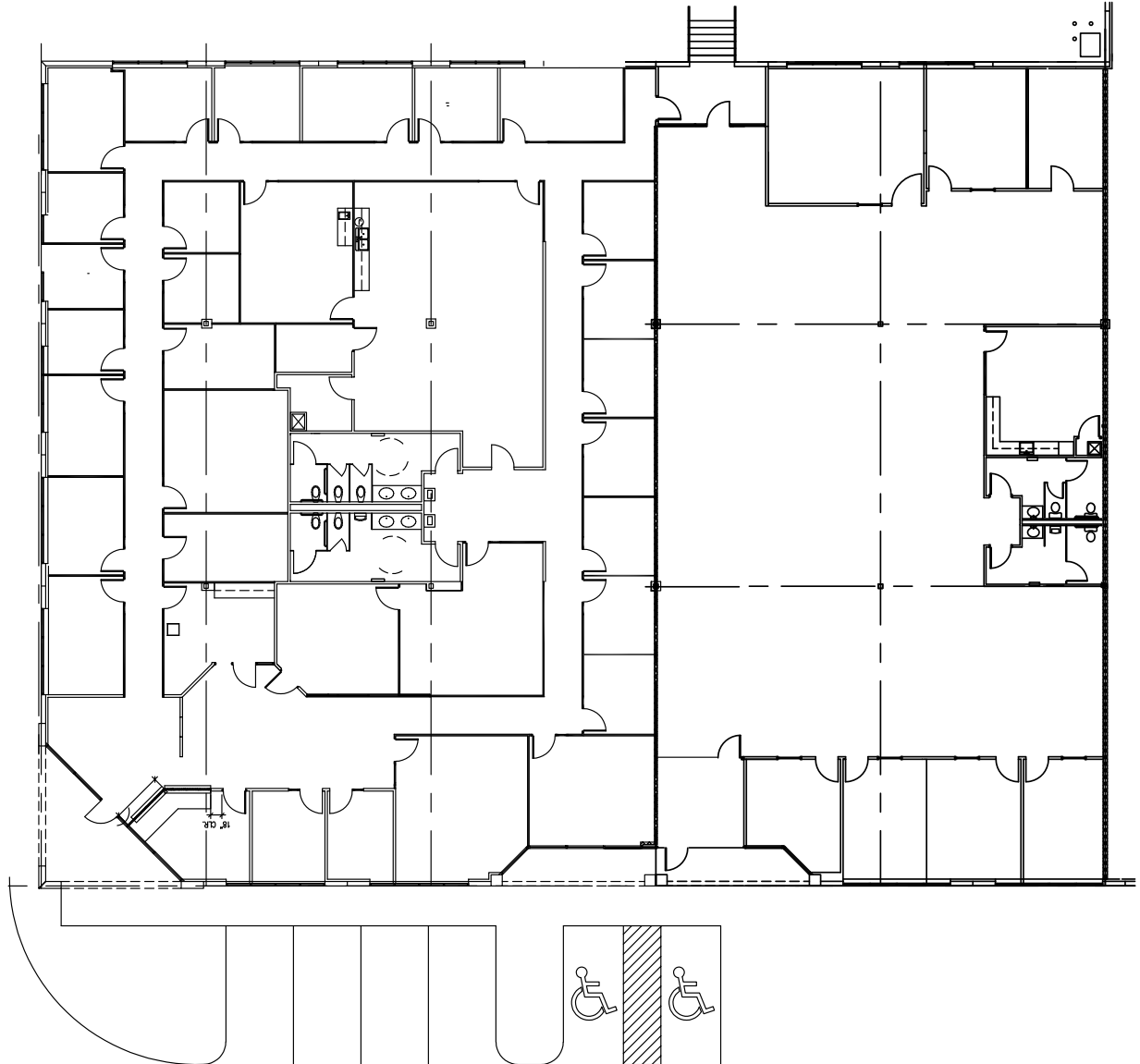
**Brooks Benkendorfer**  
brooksbenkendorfer@hpitx.com  
(512) 848-2582

No warranty or representation, expressed or implied, is made as to the accuracy of the information contained herein, and same is submitted subject to errors, omissions, change of price, rental or other conditions, withdrawal without notice, and to any special listing conditions imposed by the principals.

# Stonehollow 5

11801 Stonehollow Drive - Austin, TX 78758

**Suite 100 + 110**  
**15,592 SF**  
**Flex Office**



**Davis Bass**  
bass@hpitx.com  
(512) 203-5130

**Brooks Benkendorfer**  
brooksbenkendorfer@hpitx.com  
(512) 848-2582

No warranty or representation, expressed or implied, is made as to the accuracy of the information contained herein, and same is submitted subject to errors, omissions, change of price, rental or other conditions, withdrawal without notice, and to any special listing conditions imposed by the principals.